

KEYWORD SEARCH

**CRYSTALLIZED™ - Swarovski Elements**

- Crystal Beads
- Crystal Pendants
- Crystal Components
- Crystal Pearls
- Crystal Sew-On Stones

**GLASS BEADS**

- Glass Beads
- Lampwork Glass Beads
- Cubic Zirconia Beads
- Artist Beads

**JAPANESE SEED BEADS**

- Round Seed Beads
- Seed Bead Shapes
- Delica Seed Beads

**NATURAL BEADS**

- Semi-Precious Beads
- Freshwater Pearls
- Wood, Shell, Horn, Bone
- Felt and Resin Beads

**METAL BEADS**

- Alphabet Beads
- Silver Beads
- Gold Beads
- Brass Beads
- Copper Beads
- Thai Hill Tribe Silver

**CHARMS AND PENDANTS**

- Silver Charms
- Gold Charms
- Brass Charms
- Copper Charms
- Stamping Blanks & Charms
- Pendants
- Buttons

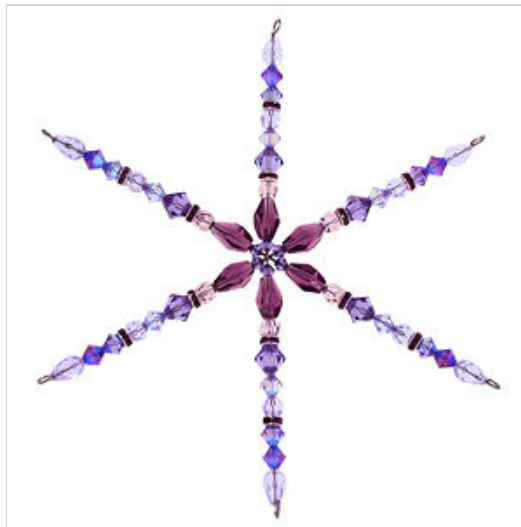
**SILVER COMPONENTS**

- Findings
- Clasps
- Ear Wires
- Links, Caps, Components
- Bangles and Rings
- Artist Findings

## Techniques: Beaded Snowflake Form

Learn to make your own fabulous holiday decorations using our snowflake forms! Check out our [inspiration page](#) for more ideas.

Beading Techniques > Basic Beading Techniques > Beaded Snowflake Form



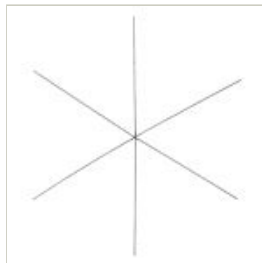
**Materials**

- Snowflake Form
- Beads

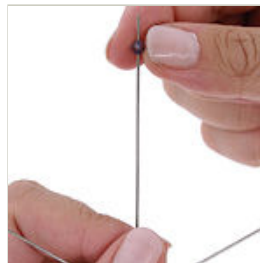
**Tools**

- Round Nose Pliers

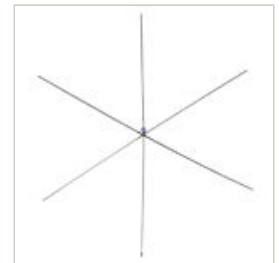
**Note:** Take your snowflake a step further and embellish the ends. Add a charm or dangle to the loops at the end of each wire. Attach your snowflake to packages for that extra touch. Even add an ornament hook or ribbon to one of the loops to decorate your tree or your house!



**Step 1**  
Choose a snowflake form.



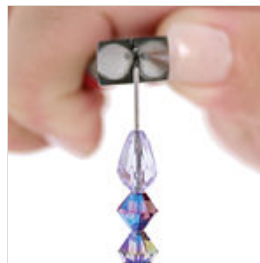
**Step 2**  
Choose one of the wires and add your first bead.



**Step 3**  
It is a good idea to start with small beads in the center. The wires are close together here and this will ensure all your beads will fit.



**Step 4**  
Continue adding beads to the wire, leaving at least 1/2 inch of space at the top.



**Step 5**  
Firmly grasp the end of the wire with your round nose pliers so the wire is flush with the tool.



**Step 6**  
Rotate the pliers to form a loop.

**GOLD COMPONENTS**

- Findings
- Clasps
- Ear Wires
- Links, Caps, Components
- Bangles

**BRASS COMPONENTS**

- Findings, Clasps, Earwires
- Links and Components

**COPPER COMPONENTS**

- Findings
- Clasps
- Links, Caps, Components

**BASE METAL COMPONENTS**

- Findings

**STRINGING MATERIALS**

- Chain
- Wire
- Beading Wire
- Beading Thread
- Elastic and Cord
- Wire Lace Ribbon

**TOOLS AND SUPPLIES**

- Bead Kits
- Beading Tools
- Design Tools
- Storage Supplies
- Gift Bags and Boxes
- Books

**NEW AND SPECIALS**

- New Products
- Specials
- Gift Certificate

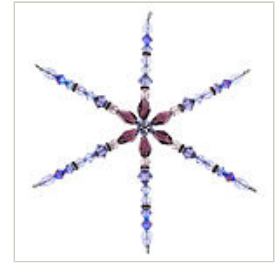
**FREE SHIPPING!**  
 FusionBeads.com offers free standard shipping on all domestic orders.  
 No minimum purchase required.



**Step 7**  
 Rotate the pliers as far as your wrist allows and re-adjust, making sure to stay in the same spot on your pliers.



**Step 8**  
 Continue rotating until a complete loop is formed.



**Step 9**  
 Repeat the process for the remaining wires on your snowflake.

[View Cart](#)

[Email This Page](#)

[Bookmark This Page](#)

[Return To Top](#)

ORDER QUESTIONS [orders@fusionbeads.com](mailto:orders@fusionbeads.com) PRODUCT QUESTIONS & REQUESTS [info@fusionbeads.com](mailto:info@fusionbeads.com) CUSTOMER SERVICE 1.888.781.3559

[Contact Us](#) | [Customer Service](#) | [Frequently Asked Questions](#) | [Return Policy](#)

[Privacy Policy](#) | [Terms of Use](#) | [Safe Shopping Guarantee](#) | [Site Map](#) | © 2008 Fusion Beads Inc.