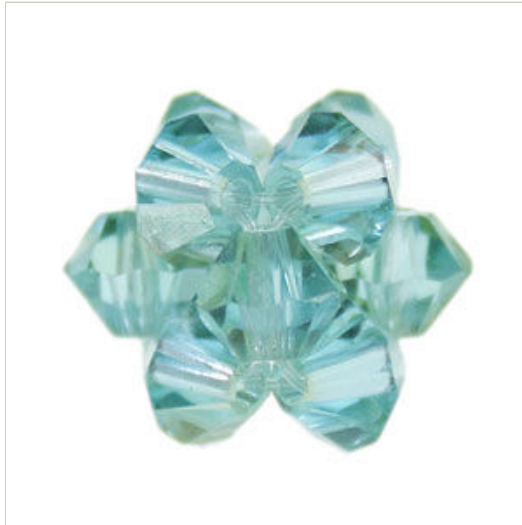


KEYWORD SEARCH

## Techniques: Right Angle Weave Bead

Beading Techniques > Bead Weaving Techniques > Right Angle Weave Bead



### Materials

- 12 beads (we used 4mm crystal bicone beads)
- Toho Clear Beading Thread (we used size .16mm)

### Tools

- Size 12 Beading Needles

**Tip:** Try using round beads or pearls for a different look.

- CRYSTALLIZED™ - Swarovski Elements**
- Crystal Beads
  - Crystal Pendants
  - Crystal Components
  - Crystal Pearls
  - Crystal Sew-On Stones
- GLASS BEADS**
- Glass Beads
  - Lampwork Glass Beads
  - Cubic Zirconia Beads
  - Artist Beads
- JAPANESE SEED BEADS**
- Round Seed Beads
  - Seed Bead Shapes
  - Delicas by Number
  - Delicas by Color
- NATURAL BEADS**
- Semi-Precious Beads
  - Freshwater Pearls
  - Wood, Shell, Horn, Bone
  - Felt and Resin Beads
- METAL BEADS**
- Alphabet Beads
  - Silver Beads
  - Gold Beads
  - Brass Beads
  - Copper Beads
  - Thai Hill Tribe Silver
- CHARMS AND PENDANTS**
- Silver Charms
  - Gold Charms
  - Brass Charms
  - Copper Charms
  - Stamping Blanks & Charms
  - Pendants
  - Buttons
- SILVER COMPONENTS**
- Findings
  - Clasps
  - Ear Wires
  - Links, Caps, Components
  - Bangles and Rings



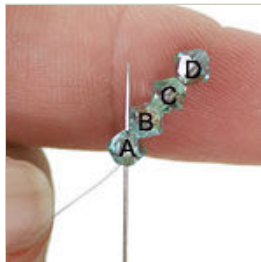
**Step 1**  
Choose a crystal color.



**Step 2**  
Cut a piece of thread about 3 feet long, and thread your needle.



**Step 3**  
String 4 beads.



**Step 4**  
Bring the beads down toward the end of your thread, leaving a 3-inch tail. Go back through bead A. This will create a ring of beads.



**Step 5**  
Pass your needle back around the ring of beads (B, C, D) and exit again from bead A.



**Step 6**  
String 3 beads.

Artist Findings

**GOLD COMPONENTS**

Findings

Clasps

Ear Wires

Links, Caps, Components

Bangles and Rings

**BRASS COMPONENTS**

Findings, Clasps, Earwires

Links and Components

**COPPER COMPONENTS**

Findings

Clasps

Ear Wires

Links, Caps, Components

**BASE METAL COMPONENTS**

Findings

**STRINGING MATERIALS**

Chain

Wire

Beading Wire

Beading Thread

Elastic and Cord

Wire Lace Ribbon

**TOOLS AND SUPPLIES**

Bead Kits

Beading Tools

Design Tools

Storage Supplies

Gift Bags and Boxes

Books

**NEW AND SPECIALS**

New Products

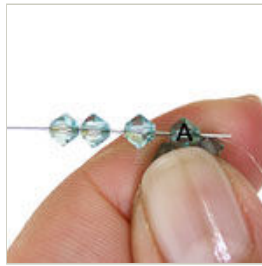
Specials

Gift Certificate

**FREE SHIPPING!**

FusionBeads.com offers free standard shipping on all domestic orders.

No minimum purchase required.



**Step 7**  
Go back through bead A.



**Step 8**  
Go through bead B and bead C.



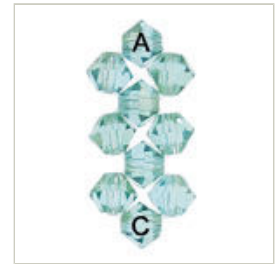
**Step 9**  
String 3 beads.



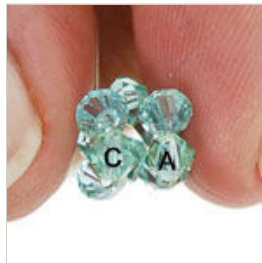
**Step 10**  
Go back through bead C.



**Step 11**  
Go through bead D and bead A.



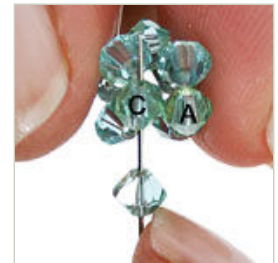
**Step 12**  
You should now have a strip of right angle weave that is 3 sections wide.



**Step 13**  
Fold the strip so the two ends are next to each other. Bead C and bead A should be side-by-side.



**Step 14**  
String 1 bead.



**Step 15**  
To connect the strip of right angle weave into a bead, go up through bead C.



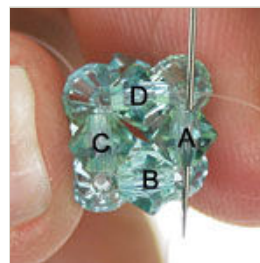
**Step 16**  
Pull the thread taut.



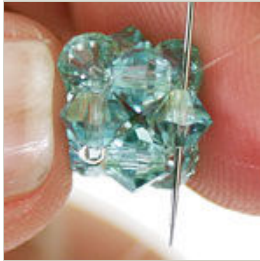
**Step 17**  
String 1 bead.



**Step 18**  
Go down through bead A.



**Step 19**  
Pull the thread taut. This should now be a four-sided bead.



**Step 22**  
Continue reinforcing each side of the right angle weave bead several times to make the bead stiff.

**Step 20**  
The bead is not stiff and needs to be reinforced. To reinforce the bead, go through bead B, bead C, bead D and then bead A again.



**Step 23**  
Once all sides of the bead have been reinforced, cut the thread.

**Step 21**  
Rotate the bead.

[View Cart](#)

[Email This Page](#)

[Bookmark This Page](#)

[Return To Top](#)

---

ORDER QUESTIONS [orders@fusionbeads.com](mailto:orders@fusionbeads.com) PRODUCT QUESTIONS & REQUESTS [info@fusionbeads.com](mailto:info@fusionbeads.com) CUSTOMER SERVICE 1.888.781.3559

[Contact Us](#) | [Customer Service](#) | [Frequently Asked Questions](#) | [Return Policy](#)

---

[Privacy Policy](#) | [Terms of Use](#) | [Safe Shopping Guarantee](#) | [Site Map](#) | © 2008 Fusion Beads Inc.