

CRYSTALLIZED™ Swarovski Elements

Crystal Beads
Crystal Pendants
Crystal Components
Crystal Pearls
Crystal Sew-On Stones

GLASS BEADS

Glass Beads
Fire Polished Glass Beads
Lampwork Glass Beads
Cubic Zirconia Beads
Artist Beads

JAPANESE SEED BEADS

Round Seed Beads
Seed Bead Shapes
Delicas by Number
Delicas by Color

NATURAL BEADS

Gemstone Beads
Freshwater Pearls
Wood, Shell, Horn, Bone
Felt and Resin Beads

METAL BEADS

Alphabet Beads
Silver Beads
Gold Beads
Brass Beads
Copper Beads
Thai Hill Tribe Silver

CHARMS AND PENDANTS

Techniques: Picture Frames - Using Diamond Glaze

[Click here to download a printable copy of this technique.](#)

Beading Techniques > Crafting Techniques > Picture Frames - Using Diamond Glaze



Materials

- Collage Pendant
- Picture or design
- Diamond Glaze
- Adhesive (we used Hypo Paper Cement)

Tools

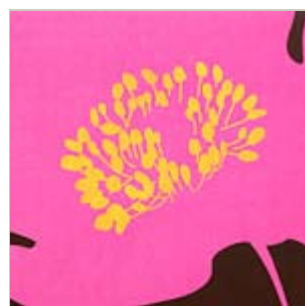
- Picture Frame Template (view & print)
- Pencil
- Art Knife
- Jewel Setter

Tip: If printing a picture, use an image printed with non-water-soluble inks. Images printed with an ink-jet printer will bleed.

Tip: Do not shake Diamond Glaze. Bubbles will form.

Tip: Try using different materials such as photos, stamps or playing cards. Add crystals, beads or charms for dimension.

Tip: Diamond Glaze can be used as an adhesive as well. So, try gluing a crystal on top of the picture after the glaze has dried for a little sparkle.



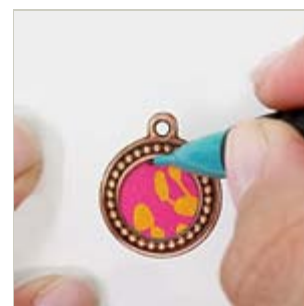
Step 1

Find a picture or design for the frame.



Step 2

Move the template over the image until you have found the desired picture.



Step 3

Use a pencil to trace the template over the image.

- Silver Charms
- Gold Charms
- Brass Charms
- Copper Charms
- Stamping Blanks & Charms
- Collage Pendants
- Pendants
- Buttons

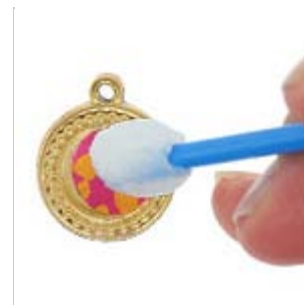
SILVER COMPONENTS



Step 4
Cut out the image with an art knife.



Step 5
Apply a thin coat of an adhesive to the picture frame.



Step 6
Lay the image into the picture frame. Use the Jewel Setter for easy application.

- Findings
- Clasps
- Ear Wires
- Links, Caps, Components
- Bangles and Rings
- Artist Findings

GOLD COMPONENTS



Step 7
Press the image into the frame making sure that all of the edges are laying flat. Use the other end of the Jewel Setter or your finger.



Step 8
Let the glue set for a few minutes.



Step 9
Before applying the Diamond Glaze, squeeze a little bit onto a scrap piece of paper to release air bubbles.

- Findings
- Clasps
- Ear Wires
- Links, Caps, Components
- Bangles and Rings

BRASS COMPONENTS



Step 10
Fill the picture frame with Diamond Glaze. Completely cover the image in the frame going all the way to the edge of the frame. Do not over fill the frame with glaze.



Step 11
If bubbles do appear in the glaze, use a small needle or paint brush to pop the bubbles. The bubbles will be harder to pop once the glaze starts to set.



Step 12
Let the glaze set for 2-3 hours on an even surface. Congratulations! You have created a unique picture frame piece to use in your jewelry designs.

- Findings, Clasps, Earwires
- Links and Components

COPPER COMPONENTS

- Findings
- Clasps
- Ear Wires
- Links, Caps, Components

BASE METAL COMPONENTS

- Findings
- Clasps
- Ear Wires
- Bead Craft Findings
- Filigree and Components

STRINGING MATERIALS

Chain
Wire
Beading Wire
Beading Thread
Elastic and Cord
Wire Lace Ribbon

TOOLS AND SUPPLIES

Bead Kits
Add a Bead Products
Beading Tools
Design Tools
Storage Supplies
Gift Bags and Boxes
Books

NEW AND SPECIALS

New Products
Product Specials & 50% off
Gift Certificate

FREE SHIPPING!
FusionBeads.com offers
free standard shipping on
all domestic orders.
No minimum purchase
required.

ORDER QUESTIONS orders@fusionbeads.com **PRODUCT QUESTIONS & REQUESTS** info@fusionbeads.com **CUSTOMER SERVICE** 1.888.781.3559

Contact Us | Customer Service | Frequently Asked Questions | Return Policy

[Privacy Policy](#) | [Terms of Use](#) | [Safe Shopping Guarantee](#) | [Site Map](#) | © 2009 Fusion Beads Inc.