

# Tartan by FusionBeads.com



Approximate finished length: 7.5 inches

## **Beads and other products needed for one bracelet:**

294 pieces (10 bags) - 4mm Swarovski Crystal Mix - Maple (CM0202)  
2 - 6mm Indian Red Swarovski Crystal Round Beads (06RD0140)  
1 bag - Size 11 Silver Lined Light Olive Green Round Japanese Seed Beads (SB1587)  
40 feet - Smoke Gray Fire Line Braided Bead Thread Size D, 6lb. (SM1001)  
Thread Heaven Thread Conditioner (TL1027)

## **Tools needed to complete the bracelet:**

Scissors  
English Beading Needles, Size 10  
Perfect End Thread Burner

## **Beading Techniques needed to complete the bracelet:**

Basic Right Angle Weave  
Right Angle Weave Clasp Option 2

*For step-by-step photos and instructions on these and other techniques, visit [FusionBeads.com](http://FusionBeads.com) and select Beading Techniques from the top navigation bar.*

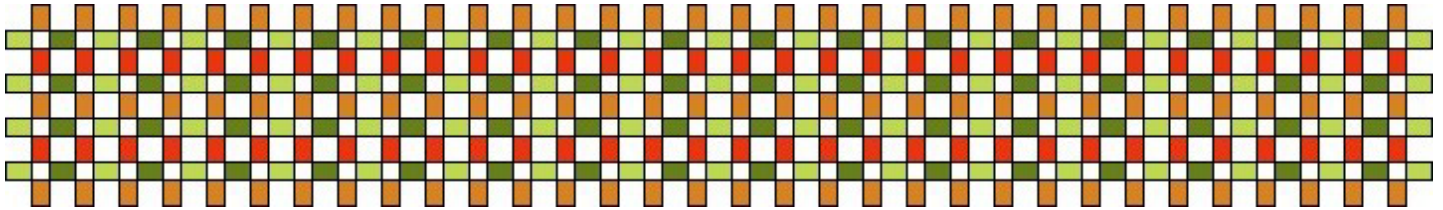
## **Instructions to complete “Tartan” bracelet:**

### **Step 1**

The Swarovski crystal Maple mix contains five colors: Topaz, Lime, Smoked Topaz, Indian Red and Khaki. This bracelet only uses four colors: Topaz, Lime, Indian Red, and Khaki. To make this exact bracelet, start by removing all of the Smoked Topaz crystals. To add variety and/or experiment, use the Smoked Topaz crystals at random, substitute them for a different color in the pattern, or use them as the center stripe of the bracelet.

### **Step 2**

Thread a needle with 5 feet of beading thread (add new thread as needed), leaving a 12-inch tail. Using right angle weave (see Basic Right Angle Weave Technique), weave a 32 row bracelet that is four four-bead units wide with 96 Topaz crystals, 68 Lime crystals, 64 Indian Red crystals, and 64 Khaki crystals, as shown in the graph below. If you find this is not long enough, continue weaving to your desired length using the remainder of the crystals.



### **Step 3**

Weave the loop side of the clasp (see Right Angle Weave Clasp Option 2) at one end of the bracelet using two 4mm Indian Red crystals and size 11 silver lined light olive green round Japanese seed beads, and weave the other side of the clasp at the other end using two 6mm Indian Red Swarovski crystal round beads and seed beads.

### **Step 4**

Reinforce the clasp and burn all ends of thread with a Perfect End Thread Burner.

**For more Inspiration jewelry ideas and to meet all your beading needs, visit [FusionBeads.com](http://FusionBeads.com)!**

