

Mocca Swirl by FusionBeads.com



Graph made with Beader's Canvas software (BK2597)

Beads and other products needed for one bracelet:

- 1 - Size 11 Matte Cream Delica Beads - DB0353 (11DB0353)
- 1 - Size 11 Opaque Luster Golden Oak Delica Beads - DB0208 (11DB0208)
- 1 - Size 11 Opaque Luster Pewter Delica Beads - DB0251 (11DB0251)
- 1 - Size 11 Transparent Inside Color Lined Chocolate Cake Batter Delica Beads - DB1710 (11DB1710)
- 1 - Bronze Swarovski Crystal Pearl Bead - 5810 - 8mm (PL5511)
- 1 - Crystal Clear FireLine Braided Bead Thread .008 diameter, 6 lb/Size D (SM4429)

Tools needed to complete the bracelet:

Scissors
Size 12 English Beading Needles (TL1647)
Perfect End Thread Burner (TL1006)

Beading Techniques needed to complete the bracelet:

Flat, Even 3-Drop Peyote Stitch
Using a Perfect End Thread Burner

For step-by-step photos and instructions on these and other techniques, visit FusionBeads.com and select Beading Techniques from the top navigation bar.

Instructions to complete "Mocca Swirl" bracelet:

Step 1

Thread a needle with 5 feet of beading thread (add new thread as needed). Use three-drop peyote stitch (see Flat, Even 3-Drop Peyote Stitch Technique) to weave the pattern shown (see next page for enlarged chart).

Step 2

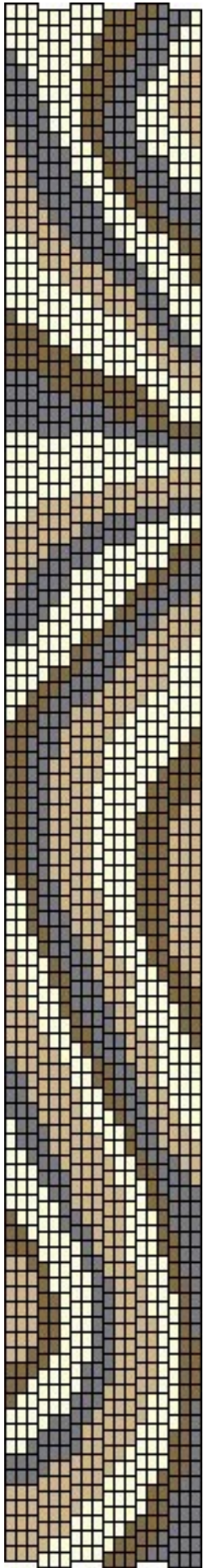
When the bracelet reaches the desired length, weave the needle through beads to the middle of the last row. String enough Delica beads to fit around the pearl, and pass through the adjacent bead, forming a loop. Reinforce this loop at least three times. Use a Perfect End Thread Burner to burn the end of the thread (see Perfect End Thread Burner Technique).

Step 3

Anchor a thread at the other end of the bracelet or use the remaining thread tail to attach the button clasp. Weave to the middle of the first row. String four Delica beads, one pearl, and one Delica bead. Pass back through the pearl and the four Delica beads. Weave back through a few rows of the bracelet, and use a thread burner to burn the end of the thread.

For more Inspiration jewelry ideas and to meet all your beading needs, visit FusionBeads.com!

Photography, text and jewelry design © 2011 Fusion Beads, Inc.



Text Pattern:

Color Key:

1 - Size 11 Opaque Luster Golden Oak Delica Beads - DB0208

2 - Size 11 Opaque Luster Pewter Delica Beads - DB0251

3 - Size 11 Matte Cream Delica Beads - DB0353

4 - Size 11 Transparent Inside Color Lined Chocolate Cake Batter Delica Beads - DB1710

Row 001 L -> R (3)1, (6)3, (4)4, (5)2

Row 002 L <- R (3)2, (2)4, (3)3, (1)1

Row 002 L -> R (3)1, (3)3, (2)4, (1)2

Row 003 L <- R (3)2, (1)4, (2)3, (3)1

Row 003 L -> R (3)1, (3)3, (3)4

Row 004 L <- R (3)2, (3)3, (3)1

Row 004 L -> R (4)1, (3)3, (2)4

Row 005 L <- R (3)2, (3)3, (3)1

Row 005 L -> R (6)1, (1)3, (2)4

Row 006 L <- R (2)2, (1)4, (3)3, (3)1

Row 006 L -> R (3)2, (3)1, (2)3, (1)4

Row 007 L <- R (1)2, (2)4, (2)3, (3)1, (1)2

Row 007 L -> R (3)2, (3)1, (3)3

Row 008 L <- R (1)2, (2)4, (1)3, (2)1, (3)2

Row 008 L -> R (2)3, (2)2, (2)1, (3)3

Row 009 L <- R (1)2, (2)4, (3)1, (3)2

Row 009 L -> R (3)3, (1)2, (2)1, (3)3

Row 010 L <- R (1)2, (1)4, (1)3, (3)1, (2)2, (1)3

Row 010 L -> R (3)3, (2)2, (2)1, (2)3

Row 011 L <- R (1)2, (1)4, (1)3, (3)1, (3)3

Row 011 L -> R (1)4, (2)3, (3)2, (1)1, (2)3

Row 012 L <- R (2)4, (1)3, (3)1, (3)3

Row 012 L -> R (2)4, (2)3, (2)2, (2)1, (1)3

Row 013 L <- R (2)4, (1)3, (2)1, (1)2, (3)3

Row 013 L -> R (3)4, (1)3, (2)2, (2)1, (1)3

Row 014 L <- R (2)4, (1)3, (2)1, (1)2, (2)3, (1)4

Row 014 L -> R (2)1, (1)4, (2)3, (1)2, (2)1, (1)3

 Row 015 L <- R (2)4, (1)3, (2)1, (1)2, (1)3, (2)4

 Row 015 L -> R (3)1, (2)3, (1)2, (2)1, (1)3

 Row 016 L <- R (1)2, (1)4, (1)3, (2)1, (1)2, (1)3, (2)4

 Row 016 L -> R (3)1, (2)3, (1)2, (2)1, (1)3

 Row 017 L <- R (1)2, (1)4, (1)3, (2)1, (1)2, (1)3, (2)4

 Row 017 L -> R (3)1, (2)3, (1)2, (1)1, (2)3

 Row 018 L <- R (1)2, (1)4, (1)3, (2)1, (1)2, (1)3, (2)4

 Row 018 L -> R (3)1, (2)3, (1)2, (1)1, (2)3

 Row 019 L <- R (1)2, (2)4, (2)1, (1)2, (2)3, (1)4

 Row 019 L -> R (3)1, (2)3, (1)2, (1)1, (2)3

 Row 020 L <- R (2)2, (1)4, (3)1, (2)3, (1)4

 Row 020 L -> R (2)1, (1)4, (1)3, (2)2, (3)3

 Row 021 L <- R (2)2, (1)4, (1)3, (2)1, (3)3

 Row 021 L -> R (3)4, (1)3, (1)2, (1)1, (2)3, (1)4

 Row 022 L <- R (2)2, (1)4, (1)3, (2)1, (3)3

 Row 022 L -> R (2)4, (1)3, (2)2, (1)1, (2)3, (1)4

 Row 023 L <- R (3)2, (1)3, (2)1, (1)2, (2)3

 Row 023 L -> R (1)4, (2)3, (1)2, (2)1, (2)3, (1)4

 Row 024 L <- R (3)2, (1)3, (2)1, (1)2, (2)3

 Row 024 L -> R (3)3, (3)1, (1)3, (2)4

 Row 025 L <- R (3)2, (1)3, (2)1, (2)2, (1)3

 Row 025 L -> R (3)3, (3)1, (1)3, (1)4, (1)2

 Row 026 L <- R (1)1, (2)2, (2)3, (1)1, (3)2

 Row 026 L -> R (3)3, (3)1, (2)4, (1)2

 Row 027 L <- R (2)1, (1)2, (2)3, (2)1, (2)2

 Row 027 L -> R (2)3, (1)2, (3)1, (1)4, (2)2

 Row 028 L <- R (3)1, (1)4, (2)3, (2)1, (1)2

 Row 028 L -> R (1)3, (2)2, (3)1, (2)2, (1)1

 Row 029 L <- R (1)3, (2)1, (1)4, (2)3, (2)1, (1)2

 Row 029 L -> R (1)3, (2)2, (2)1, (1)3, (2)2, (1)1

Row 030 L <- R (2)3, (1)1, (1)2, (1)4, (1)3, (3)1

 Row 030 L -> R (3)2, (1)1, (2)3, (1)2, (2)1

 Row 031 L <- R (3)3, (1)2, (2)4, (3)1

 Row 031 L -> R (2)2, (2)1, (2)3, (1)2, (2)1

 Row 032 L <- R (3)3, (2)2, (1)4, (3)1

 Row 032 L -> R (2)2, (1)1, (2)3, (1)4, (2)1, (1)3

 Row 033 L <- R (3)3, (2)2, (1)4, (3)1

 Row 033 L -> R (1)2, (2)1, (2)3, (1)4, (2)1, (1)3

 Row 034 L <- R (3)3, (1)1, (2)2, (1)3, (2)1

 Row 034 L -> R (3)1, (1)3, (1)4, (1)2, (2)1, (1)3

 Row 035 L <- R (1)4, (2)3, (1)1, (2)2, (2)3, (1)1

 Row 035 L -> R (3)1, (2)4, (1)2, (1)1, (2)3

 Row 036 L <- R (2)4, (1)3, (2)1, (1)2, (3)3

 Row 036 L -> R (3)1, (1)4, (2)2, (3)3

 Row 037 L <- R (2)4, (1)3, (2)1, (1)2, (1)4, (2)3

 Row 037 L -> R (2)1, (1)3, (3)2, (3)3

 Row 038 L <- R (3)4, (1)3, (2)1, (1)4, (2)3

 Row 038 L -> R (2)1, (1)3, (3)2, (3)3

 Row 039 L <- R (1)1, (2)4, (1)3, (2)1, (2)4, (1)3

 Row 039 L -> R (1)1, (2)3, (2)2, (1)1, (2)3, (1)4

 Row 040 L <- R (2)1, (1)4, (1)3, (2)1, (1)2, (1)4, (1)3

 Row 040 L -> R (1)1, (2)3, (2)2, (1)1, (1)3, (2)4

 Row 041 L <- R (3)1, (2)3, (1)1, (2)2, (1)4

 Row 041 L -> R (3)3, (1)2, (2)1, (1)3, (2)4

 Row 042 L <- R (3)1, (2)3, (1)1, (2)2, (1)4

 Row 042 L -> R (2)3, (1)4, (3)1, (3)4

 Row 043 L <- R (3)1, (2)3, (1)1, (3)2

 Row 043 L -> R (2)3, (1)4, (3)1, (3)4

 Row 044 L <- R (3)1, (3)3, (1)1, (2)2

 Row 044 L -> R (1)3, (1)0, (1)4, (3)1, (3)4

 Row 045 L <- R (3)1, (3)3, (1)1, (2)2

Row 045 L -> R (1)3, (2)4, (2)1, (1)3, (3)4

 Row 046 L <- R (3)1, (3)3, (2)1, (1)2

 Row 046 L -> R (2)4, (1)2, (2)1, (1)3, (3)4

 Row 047 L <- R (3)1, (3)3, (2)1, (1)2

 Row 047 L -> R (2)4, (1)2, (2)1, (1)3, (3)4

 Row 048 L <- R (3)1, (3)3, (2)1, (1)2

 Row 048 L -> R (2)4, (1)2, (2)1, (1)3, (3)4

 Row 049 L <- R (3)1, (3)3, (2)1, (1)2

 Row 049 L -> R (2)4, (1)2, (2)1, (1)3, (3)4

 Row 050 L <- R (2)1, (1)4, (3)3, (2)1, (1)2

 Row 050 L -> R (2)4, (1)2, (2)1, (2)3, (2)4

 Row 051 L <- R (1)1, (2)4, (3)3, (2)1, (1)2

 Row 051 L -> R (2)4, (1)2, (2)1, (2)3, (2)4

 Row 052 L <- R (3)4, (3)3, (2)1, (1)2

 Row 052 L -> R (2)4, (1)2, (3)1, (2)3, (1)4

 Row 053 L <- R (3)4, (3)3, (2)1, (1)2

 Row 053 L -> R (2)4, (1)2, (3)1, (3)3

 Row 054 L <- R (2)4, (4)3, (1)1, (2)2

 Row 054 L -> R (2)4, (1)2, (3)1, (3)3

 Row 055 L <- R (1)4, (4)3, (2)1, (2)2

 Row 055 L -> R (3)4, (3)1, (3)3

 Row 056 L <- R (4)3, (2)1, (3)2

 Row 056 L -> R (1)3, (2)4, (3)1, (3)3

 Row 057 L <- R (3)3, (3)1, (2)2, (1)4

 Row 057 L -> R (2)3, (1)4, (2)2, (2)1, (2)3

 Row 058 L <- R (3)3, (3)1, (1)2, (2)4

 Row 058 L -> R (3)3, (3)2, (3)1

 Row 059 L <- R (3)3, (2)1, (1)2, (2)4, (1)3

 Row 059 L -> R (3)3, (1)4, (2)2, (3)1

 Row 060 L <- R (3)3, (1)1, (2)2, (3)3

 Row 060 L -> R (3)3, (2)4, (1)2, (3)1

Row 061 L <- R (1)3, (2)1, (3)2, (3)3

 Row 061 L -> R (2)2, (2)3, (2)4, (1)2, (2)1

 Row 062 L <- R (3)1, (2)2, (1)4, (3)3

 Row 062 L -> R (3)2, (3)3, (2)2, (1)1

 Row 063 L <- R (3)1, (2)4, (3)3, (1)2

 Row 063 L -> R (3)2, (3)3, (3)2

 Row 064 L <- R (1)1, (2)2, (1)4, (3)3, (2)2

 Row 064 L -> R (1)1, (2)2, (3)3, (2)4, (1)2

 Row 065 L <- R (3)2, (3)3, (3)2

 Row 065 L -> R (2)1, (1)2, (4)3, (2)4

 Row 066 L <- R (2)2, (1)4, (3)3, (3)2

 Row 066 L -> R (3)1, (2)2, (4)3

 Row 067 L <- R (3)4, (3)3, (2)2, (1)1

 Row 067 L -> R (3)1, (3)2, (3)3

 Row 068 L <- R (1)4, (2)3, (3)2, (3)1

 Row 068 L -> R (4)1, (2)2, (3)3

 Row 069 L <- R (3)3, (3)2, (3)1

 Row 069 L -> R (2)3, (4)1, (3)2

 Row 070 L <- R (3)2, (6)1

 Row 070 L -> R (3)3, (6)1

 Row 071 L <- R (6)1, (3)3

 Row 071 L -> R (6)3, (3)1

 Row 072 L <- R (3)1, (6)3

 Row 072 L -> R (9)3

 Row 073 L <- R (9)3

 Row 073 L -> R (9)3

 Row 074 L <- R (3)2, (6)3

 Row 074 L -> R (6)3, (3)2

 Row 075 L <- R (3)4, (6)2

 Row 075 L -> R (7)2, (2)4

 Row 076 L <- R (3)3, (2)4, (4)2

Row 076 L -> R (6)2, (3)4

 Row 077 L <- R (3)3, (3)4, (3)2

 Row 077 L -> R (3)2, (4)4, (2)3

 Row 078 L <- R (2)1, (1)3, (5)4, (1)2

 Row 078 L -> R (3)2, (3)4, (3)3

 Row 079 L <- R (3)1, (3)3, (3)4

 Row 079 L -> R (4)4, (4)3, (1)1

 Row 080 L <- R (2)2, (1)1, (3)3, (3)4

 Row 080 L -> R (3)4, (4)3, (2)1

 Row 081 L <- R (1)3, (2)2, (5)3, (1)4

 Row 081 L -> R (3)4, (3)3, (2)1, (1)2

 Row 082 L <- R (2)3, (1)2, (1)1, (5)3

 Row 082 L -> R (1)4, (5)3, (1)1, (2)2

 Row 083 L <- R (3)3, (3)1, (3)3

 Row 083 L -> R (5)3, (1)1, (3)2

 Row 084 L <- R (3)3, (3)1, (3)3

 Row 084 L -> R (3)3, (3)1, (2)2, (1)3

 Row 085 L <- R (1)4, (2)3, (2)2, (2)1, (2)3

 Row 085 L -> R (3)3, (3)1, (1)2, (2)3

 Row 086 L <- R (1)4, (2)3, (3)2, (3)1

 Row 086 L -> R (3)3, (1)1, (2)2, (3)3

 Row 087 L <- R (2)4, (2)3, (2)2, (3)1

 Row 087 L -> R (2)3, (1)1, (3)2, (3)3

 Row 088 L <- R (1)2, (2)4, (2)3, (2)2, (2)1

 Row 088 L -> R (3)1, (3)2, (1)3, (2)4

 Row 089 L <- R (3)2, (3)3, (2)2, (1)1

 Row 089 L -> R (3)1, (3)2, (2)4, (1)2

 Row 090 L <- R (3)2, (1)4, (2)3, (3)2

 Row 090 L -> R (3)1, (2)2, (1)3, (1)4, (2)2

 Row 091 L <- R (2)3, (1)2, (2)4, (1)3, (3)2

 Row 091 L -> R (2)1, (2)2, (2)3, (3)2

Row 092 L <- R (3)3, (1)2, (2)4, (3)2

 Row 092 L -> R (2)1, (1)2, (3)3, (3)2

 Row 093 L <- R (3)3, (2)2, (1)4, (3)2

 Row 093 L -> R (1)1, (2)2, (2)3, (1)4, (1)2, (2)3

 Row 094 L <- R (1)1, (2)3, (3)2, (1)3, (2)2

 Row 094 L -> R (1)1, (2)2, (1)3, (2)4, (3)3

 Row 095 L <- R (2)1, (1)3, (3)2, (2)3, (1)2

 Row 095 L -> R (3)2, (1)3, (2)4, (3)3

 Row 096 L <- R (3)1, (3)2, (2)3, (1)2

 Row 096 L -> R (3)2, (1)3, (2)4, (3)3

 Row 097 L <- R (3)1, (2)2, (1)4, (3)3

 Row 097 L -> R (3)2, (1)3, (2)4, (1)2, (2)3

 Row 098 L <- R (2)1, (1)3, (2)2, (1)4, (3)3

 Row 098 L -> R (2)2, (2)3, (2)4, (2)2, (1)3

 Row 099 L <- R (1)1, (2)3, (1)2, (2)4, (3)3

 Row 099 L -> R (1)2, (4)3, (1)4, (3)2

 Row 100 L <- R (3)3, (3)4, (3)3

 Row 100 L -> R (5)3, (1)4, (3)2

 Row 101 L <- R (2)3, (1)2, (3)4, (3)3

 Row 101 L -> R (6)3, (1)4, (2)2

 Row 102 L <- R (1)3, (2)2, (3)4, (3)3

 Row 102 L -> R (6)3, (2)4, (1)2
