

Candy Cane Crush by FusionBeads.com



Approximate finished length: 7.5 inches

Beads and other products needed for one bracelet:

- 1 - Size 11 Opaque White Delica Beads - DB0200 (11DB0200)
- 1 - Size 11 Opaque Red Delica Beads - DB0723 (11DB0723)
- 10 - 6mm Light Siam Swarovski Elements Crystal Round Beads (06RD0110)
- 1 - 19x15mm Antique Pewter Twisted Texture Toggle Clasp (PS0264)
- 2 - 2x2mm Sterling Silver Crimp Beads (SS4047)
- 2 - 3.5mm Sterling Silver Crimp Bead Covers (SS2103)
- 10 inches - Clear Soft Flex Beading Wire .014 diameter (SM0310)
- 1 - Crystal Clear FireLine Braided Bead Thread .008 diameter, 6 lb/Size D (SM4429)

Tools needed to complete the bracelet:

- Crimping pliers (TL0500)
- Wire cutters
- Scissors
- Synthetic Beeswax, 2 ounces (TL1026)
- Size 12 English Beading Needles (TL1647)
- Perfect End Thread Burner
- Mini Bead Stopper

Beading Techniques needed to complete the bracelet:

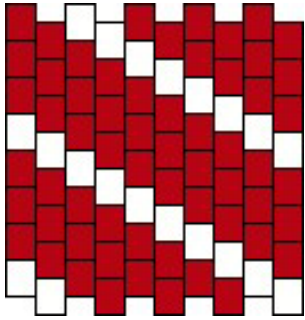
- Crimping
- Crimp Bead Covers
- Flat Peyote Stitch - Even Count
- Flat Peyote Tube Bead

For step-by-step photos and instructions on these and other techniques, visit FusionBeads.com and select Beading Techniques from the top navigation bar.

Instructions to complete “Candy Cane Crush” bracelet:

Step 1

Thread a needle with 3 feet of beading thread, and wax the thread. Leave a 12-inch tail. Using flat peyote stitch (see Flat Peyote Stitch – Even Count Technique), weave the striped pattern by following the graph below.



Graph made with Beader's Canvas software (BK2597)

Step 2

Stitch the beadwork from Step 1 into a tube (see Flat Peyote Tube Bead Technique). Finish the thread ends with a Perfect End Thread Burner.

Step 3

Repeat Steps 1 – 2 eight times, making a total of nine peyote tube beads.

Step 4

String one crimp bead and the loop on one side of the toggle clasp onto a 10-inch length of beading wire. Pass the wire back through the crimp bead, and crimp the crimp bead (see Crimping Technique).

Step 5

Cover the crimp bead with a crimp cover (see Crimp Bead Covers Technique), and trim excess wire with wire cutters.

Step 6

String these beads in the following sequence onto the beading wire:

1 – 6mm Light Siam round bead

1 – peyote tube bead

Repeat the sequence eight times, adding one 6mm Light Siam round bead after the last repeat.

Step 7

String one crimp bead and the loop on the other side of the toggle clasp onto the beading wire. Pass the wire back through the crimp bead, and crimp the crimp bead. Cover the crimp with a crimp bead cover, and trim excess wire with wire cutters.

For more Inspiration jewelry ideas and to meet all your beading needs, visit FusionBeads.com!

Text Pattern:

Color Key:

1 - Size 11 Opaque White Delica Beads - DB0200

2 - Size 11 Opaque Red Delica Beads - DB0723

Row 001 L -> R (2)1, (6)2, (2)1

Row 002 L <- R (1)2, (1)1, (3)2

Row 002 L -> R (3)2, (1)1, (1)2

Row 003 L <- R (2)2, (1)1, (2)2

Row 003 L -> R (2)2, (1)1, (2)2

Row 004 L <- R (3)2, (1)1, (1)2

Row 004 L -> R (1)2, (1)1, (3)2

Row 005 L <- R (1)1, (3)2, (1)1

Row 005 L -> R (1)1, (3)2, (1)1

Row 006 L <- R (1)2, (1)1, (3)2

Row 006 L -> R (3)2, (1)1, (1)2

Row 007 L <- R (2)2, (1)1, (2)2

Row 007 L -> R (2)2, (1)1, (2)2

Row 008 L <- R (3)2, (1)1, (1)2

Row 008 L -> R (1)2, (1)1, (3)2
