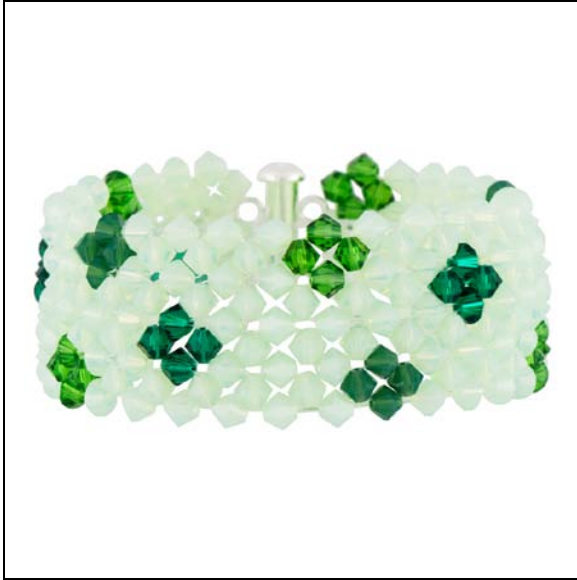


Irish Garden by FusionBeads.com



Approximate finished length: 6.5 inches

Beads and other products needed for one bracelet:

- 16 - 4mm Palace Green Opal Swarovski Elements Crystal Bicone Beads (04BI1335)
- 20 - 4mm Fern Green Swarovski Elements Crystal Bicone Beads (04BI1449)
- 20 - 4mm Emerald Swarovski Elements Crystal Bicone Beads (04BI1120)
- 200 - 4mm Chrysolite Opal Swarovski Elements Crystal Bicone Beads (04BI1463)
- 1 - 4x22mm 3 Strand Sterling Silver Tube Bar Clasp (SS3415)
- 1 - Crystal Clear FireLine Braided Bead Thread .008 diameter, 6 lb/Size D (SM4429)

Tools needed to complete the bracelet:

- Size 11 Pony Beading Needles (TL2381)
- Synthetic Beeswax (TL1026)
- Perfect End Thread Burner
- Scissors

Beading Techniques needed to complete the bracelet:

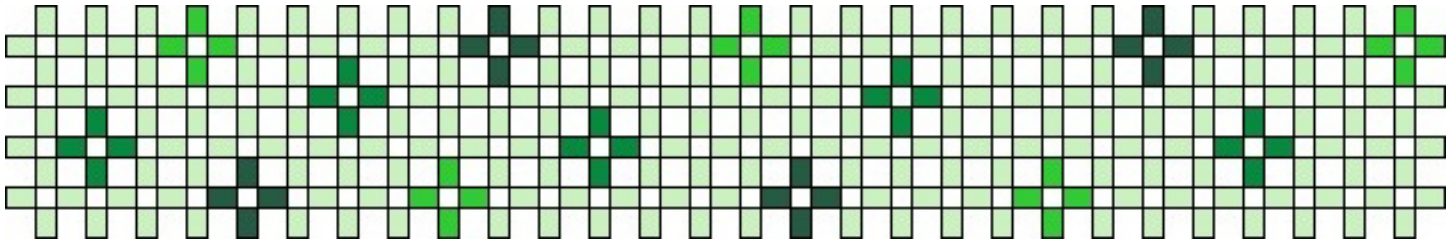
- Basic Right Angle Weave
- Right Angle Weave Clasp Option 1

For step-by-step photos and instructions on these and other techniques, visit FusionBeads.com and select Beading Techniques from the top navigation bar.

Instructions to complete “Irish Garden” bracelet:

Step 1

Thread a needle with 5 feet of beading thread (add new thread as needed), leaving a 12-inch tail. Using right angle weave (see Basic Right Angle Weave Technique), weave the pattern with crystal bicone beads by following the graph below.



Step 2

Attach one side of the tube bar clasp (see Right Angle Weave Clasp Option 1 Technique) to the end of the beadwork. Reinforce the clasp and burn thread ends with a Perfect End Thread Burner.

Step 3

Thread a needle onto the tail thread at the beginning of the beadwork, and attach the second side of the tube bar clasp. Reinforce and burn the thread ends.

For more Inspiration jewelry ideas and to meet all your beading needs, visit FusionBeads.com!

