

Patchwork by FusionBeads.com



Approximate finished length: 7.5 inches

Beads and other products needed for one bracelet:

2 - Dark Indigo Swarovski Crystal Round Bead - 5000 - 6mm(06RD0286)
3 grams - Size 11 Matte Metallic Medium Navy Delica Beads - DB0377 (11DB0377)
2.7 grams - Size 11 Opaque Wine Delica Beads - DB1376 (11DB1376)
3 grams - Size 11 Opaque Avocado Green Delica Beads - DB1135 (11DB1135)
2.7 grams - Size 11 Opaque Dark Purplish Mauve Delica Beads - DB0662 (11DB0662)
Smoke Gray FireLine Braided Bead Thread .008 diameter, 6 lb/Size D (SM1001)

Tools needed to complete the bracelet:

Scissors
Size 12 English Beading Needles (TL1647)
Perfect End Thread Burner (TL1006)

Beading Techniques needed to complete the bracelet:

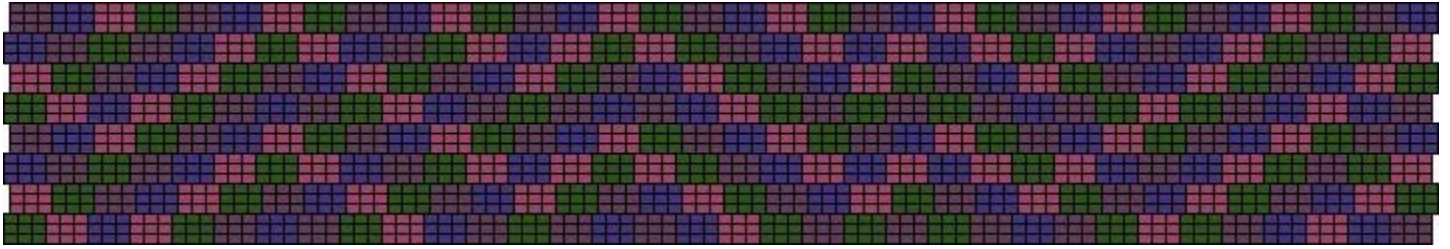
Flat Peyote Stitch - Three Drop
Flat Peyote Clasp - Option 2 (Beads with Two Loops)
Perfect End Thread Burner

*For step-by-step photos and instructions on these and other techniques, visit FusionBeads.com and select *Beading Techniques* from the top navigation bar.*

Instructions to complete "Patchwork" bracelet:

Step 1

Thread a needle with 5 feet of beading thread (add new thread as needed). Use flat peyote stitch (see Flat Peyote Stitch - Three Drop Technique) to weave the pattern shown (see next page for enlarged chart).



Graph made with Beader's Canvas software (BK2597)

Step 2

When the bracelet reaches the desired length, weave the needle through beads until it exits the sixth bead on the last row. (see Flat Peyote Clasp - Option 2 [Beads with Two Loops] Technique). String 19 matte metallic medium navy Delica beads, and pass back through the first three beads strung, forming a loop. Reinforce this loop at least three times. Weave back down through a few rows.

Step 3

In the same manner as in the previous step, exit from the 18th bead, make a second loop and reinforce. Weave back down through a few rows, and use a Perfect End Thread Burner to burn the end of the thread (see Perfect End Thread Burner Technique).

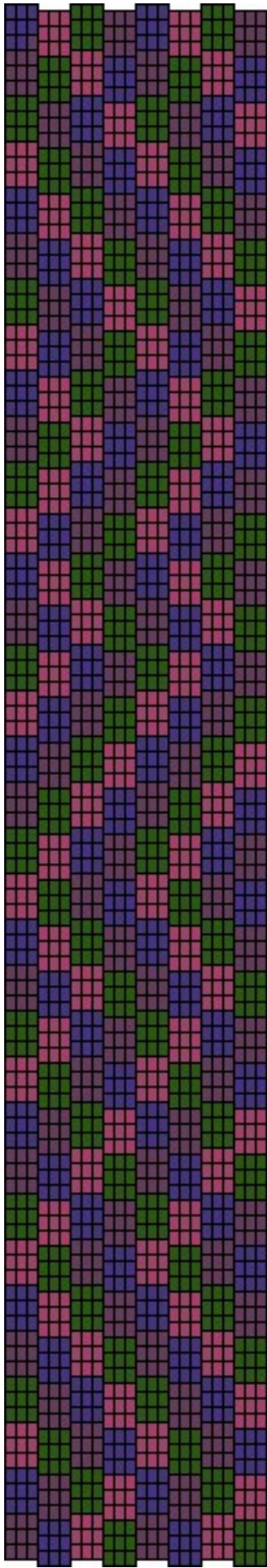
Step 4

Anchor a thread at the other end of the bracelet or use the remaining thread tail to attach the button clasps. Exit from the sixth bead, string four matte metallic medium navy Delica beads, one crystal rondelle, and one matte metallic medium navy Delica bead. Pass back through the crystal rondelle and the four Delica beads. Reinforce the button attachment.

Step 5

Weave the needle through beads. In the same manner as in the previous step, attach a second crystal round bead to align with the second loop made in Step 3. Trim and burn the end of the thread.

For more Inspiration jewelry ideas and to meet all your beading needs, visit FusionBeads.com!



Text Pattern:

Color Key:

- 1 - Size 11 Matte Metallic Medium Navy Delica Beads - DB0377
- 2 - Size 11 Opaque Dark Purplish Mauve Delica Beads - DB0662
- 3 - Size 11 Opaque Avocado Green Delica Beads - DB1135
- 4 - Size 11 Opaque Wine Delica Beads - DB1376

Row 001 L -> R (3)2, (3)1, (3)4, (3)3, (3)2, (3)1, (3)4, (3)3

Row 002 L <- R (3)3, (3)1, (3)3, (3)1

Row 002 L -> R (3)2, (3)4, (3)2, (3)4

Row 003 L <- R (3)3, (3)1, (3)3, (3)1

Row 003 L -> R (3)2, (3)4, (3)2, (3)4

Row 004 L <- R (3)4, (3)2, (3)4, (3)2

Row 004 L -> R (3)1, (3)3, (3)1, (3)3

Row 005 L <- R (3)4, (3)2, (3)4, (3)2

Row 005 L -> R (3)1, (3)3, (3)1, (3)3

Row 006 L <- R (3)4, (3)2, (3)4, (3)2

Row 006 L -> R (3)1, (3)3, (3)1, (3)3

Row 007 L <- R (3)1, (3)3, (3)1, (3)3

Row 007 L -> R (3)4, (3)2, (3)4, (3)2

Row 008 L <- R (3)1, (3)3, (3)1, (3)3

Row 008 L -> R (3)4, (3)2, (3)4, (3)2

Row 009 L <- R (3)1, (3)3, (3)1, (3)3

Row 009 L -> R (3)4, (3)2, (3)4, (3)2

Row 010 L <- R (3)4, (3)2, (3)4, (3)2

Row 010 L -> R (3)3, (3)1, (3)3, (3)1

Row 011 L <- R (3)4, (3)2, (3)4, (3)2

Row 011 L -> R (3)3, (3)1, (3)3, (3)1

Row 012 L <- R (3)4, (3)2, (3)4, (3)2

Row 012 L -> R (3)3, (3)1, (3)3, (3)1

Row 013 L <- R (3)3, (3)1, (3)3, (3)1

Row 013 L -> R (3)2, (3)4, (3)2, (3)4

Row 014 L <- R (3)3, (3)1, (3)3, (3)1

Row 014 L -> R (3)2, (3)4, (3)2, (3)4

Row 015 L <- R (3)3, (3)1, (3)3, (3)1

Row 015 L -> R (3)2, (3)4, (3)2, (3)4

Row 016 L <- R (3)2, (3)4, (3)2, (3)4

Row 016 L -> R (3)1, (3)3, (3)1, (3)3

Row 017 L <- R (3)2, (3)4, (3)2, (3)4

Row 017 L -> R (3)1, (3)3, (3)1, (3)3

Row 018 L <- R (3)2, (3)4, (3)2, (3)4

Row 018 L -> R (3)1, (3)3, (3)1, (3)3

Row 019 L <- R (3)1, (3)3, (3)1, (3)3

Row 019 L -> R (3)4, (3)2, (3)4, (3)2

Row 020 L <- R (3)1, (3)3, (3)1, (3)3

Row 020 L -> R (3)4, (3)2, (3)4, (3)2

Row 021 L <- R (3)1, (3)3, (3)1, (3)3

Row 021 L -> R (3)4, (3)2, (3)4, (3)2

Row 022 L <- R (3)2, (3)4, (3)2, (3)4

Row 022 L -> R (3)3, (3)1, (3)3, (3)1

Row 023 L <- R (3)2, (3)4, (3)2, (3)4

Row 023 L -> R (3)3, (3)1, (3)3, (3)1

Row 024 L <- R (3)2, (3)4, (3)2, (3)4

Row 024 L -> R (3)3, (3)1, (3)3, (3)1

Row 025 L <- R (3)3, (3)1, (3)3, (3)1

Row 025 L -> R (3)2, (3)4, (3)2, (3)4

Row 026 L <- R (3)3, (3)1, (3)3, (3)1

Row 026 L -> R (3)2, (3)4, (3)2, (3)4

Row 027 L <- R (3)3, (3)1, (3)3, (3)1

Row 027 L -> R (3)2, (3)4, (3)2, (3)4

Row 028 L <- R (3)4, (3)2, (3)4, (3)2

Row 028 L -> R (3)1, (3)3, (3)1, (3)3

Row 029 L <- R (3)4, (3)2, (3)4, (3)2

Row 029 L -> R (3)1, (3)3, (3)1, (3)3

Row 030 L <- R (3)4, (3)2, (3)4, (3)2

Row 030 L -> R (3)1, (3)3, (3)1, (3)3

Row 031 L <- R (3)1, (3)3, (3)1, (3)3

Row 031 L -> R (3)4, (3)2, (3)4, (3)2

Row 032 L <- R (3)1, (3)3, (3)1, (3)3

Row 032 L -> R (3)4, (3)2, (3)4, (3)2

Row 033 L <- R (3)1, (3)3, (3)1, (3)3

Row 033 L -> R (3)4, (3)2, (3)4, (3)2

Row 034 L <- R (3)2, (3)4, (3)2, (3)4

Row 034 L -> R (3)3, (3)1, (3)3, (3)1

Row 035 L <- R (3)2, (3)4, (3)2, (3)4

Row 035 L -> R (3)3, (3)1, (3)3, (3)1

Row 036 L <- R (3)2, (3)4, (3)2, (3)4

Row 036 L -> R (3)3, (3)1, (3)3, (3)1

Row 037 L <- R (3)3, (3)1, (3)3, (3)1

Row 037 L -> R (3)2, (3)4, (3)2, (3)4

Row 038 L <- R (3)3, (3)1, (3)3, (3)1

Row 038 L -> R (3)2, (3)4, (3)2, (3)4

Row 039 L <- R (3)3, (3)1, (3)3, (3)1

Row 039 L -> R (3)2, (3)4, (3)2, (3)4

Row 040 L <- R (3)2, (3)4, (3)2, (3)4

Row 040 L -> R (3)1, (3)3, (3)1, (3)3

Row 041 L <- R (3)2, (3)4, (3)2, (3)4

Row 041 L -> R (3)1, (3)3, (3)1, (3)3

Row 042 L <- R (3)2, (3)4, (3)2, (3)4

Row 042 L -> R (3)1, (3)3, (3)1, (3)3

Row 043 L <- R (3)1, (3)3, (3)1, (3)3

Row 043 L -> R (3)4, (3)2, (3)4, (3)2

Row 044 L <- R (3)1, (3)3, (3)1, (3)3

Row 044 L -> R (3)4, (3)2, (3)4, (3)2

Row 045 L <- R (3)1, (3)3, (3)1, (3)3

Row 045 L -> R (3)4, (3)2, (3)4, (3)2

```

-----
Row 046 L <- R (3)2, (3)4, (3)2, (3)4
-----
Row 046 L -> R (3)3, (3)1, (3)3, (3)1
-----
Row 047 L <- R (3)2, (3)4, (3)2, (3)4
-----
Row 047 L -> R (3)3, (3)1, (3)3, (3)1
-----
Row 048 L <- R (3)2, (3)4, (3)2, (3)4
-----
Row 048 L -> R (3)3, (3)1, (3)3, (3)1
-----
Row 049 L <- R (3)1, (3)3, (3)1, (3)3
-----
Row 049 L -> R (3)2, (3)4, (3)2, (3)4
-----
Row 050 L <- R (3)1, (3)3, (3)1, (3)3
-----
Row 050 L -> R (3)2, (3)4, (3)2, (3)4
-----
Row 051 L <- R (3)1, (3)3, (3)1, (3)3
-----
Row 051 L -> R (3)2, (3)4, (3)2, (3)4
-----
Row 052 L <- R (3)4, (3)2, (3)4, (3)2
-----
Row 052 L -> R (3)1, (3)3, (3)1, (3)3
-----
Row 053 L <- R (3)4, (3)2, (3)4, (3)2
-----
Row 053 L -> R (3)1, (3)3, (3)1, (3)3
-----
Row 054 L <- R (3)4, (3)2, (3)4, (3)2
-----
Row 054 L -> R (3)1, (3)3, (3)1, (3)3
-----
Row 055 L <- R (3)3, (3)1, (3)3, (3)1
-----
Row 055 L -> R (3)4, (3)2, (3)4, (3)2
-----
Row 056 L <- R (3)3, (3)1, (3)3, (3)1
-----
Row 056 L -> R (3)4, (3)2, (3)4, (3)2
-----
Row 057 L <- R (3)3, (3)1, (3)3, (3)1
-----
Row 057 L -> R (3)4, (3)2, (3)4, (3)2
-----
Row 058 L <- R (3)2, (3)4, (3)2, (3)4
-----
Row 058 L -> R (3)3, (3)1, (3)3, (3)1
-----
Row 059 L <- R (3)2, (3)4, (3)2, (3)4
-----
Row 059 L -> R (3)3, (3)1, (3)3, (3)1
-----
Row 060 L <- R (3)2, (3)4, (3)2, (3)4
-----
Row 060 L -> R (3)3, (3)1, (3)3, (3)1
-----
Row 061 L <- R (3)3, (3)1, (3)3, (3)1

```

Row 061 L -> R (3)2, (3)4, (3)2, (3)4

Row 062 L <- R (3)3, (3)1, (3)3, (3)1

Row 062 L -> R (3)2, (3)4, (3)2, (3)4

Row 063 L <- R (3)3, (3)1, (3)3, (3)1

Row 063 L -> R (3)2, (3)4, (3)2, (3)4

Row 064 L <- R (3)2, (3)4, (3)2, (3)4

Row 064 L -> R (3)1, (3)3, (3)1, (3)3

Row 065 L <- R (3)2, (3)4, (3)2, (3)4

Row 065 L -> R (3)1, (3)3, (3)1, (3)3

Row 066 L <- R (3)2, (3)4, (3)2, (3)4

Row 066 L -> R (3)1, (3)3, (3)1, (3)3

Row 067 L <- R (3)3, (3)1, (3)3, (3)1

Row 067 L -> R (3)4, (3)2, (3)4, (3)2

Row 068 L <- R (3)3, (3)1, (3)3, (3)1

Row 068 L -> R (3)4, (3)2, (3)4, (3)2

Row 069 L <- R (3)3, (3)1, (3)3, (3)1

Row 069 L -> R (3)4, (3)2, (3)4, (3)2

Row 070 L <- R (3)2, (3)4, (3)2, (3)4

Row 070 L -> R (3)3, (3)1, (3)3, (3)1

Row 071 L <- R (3)2, (3)4, (3)2, (3)4

Row 071 L -> R (3)3, (3)1, (3)3, (3)1

Row 072 L <- R (3)2, (3)4, (3)2, (3)4

Row 072 L -> R (3)3, (3)1, (3)3, (3)1

Row 073 L <- R (3)1, (3)3, (3)1, (3)3

Row 073 L -> R (3)2, (3)4, (3)2, (3)4

Row 074 L <- R (3)1, (3)3, (3)1, (3)3

Row 074 L -> R (3)2, (3)4, (3)2, (3)4

Row 075 L <- R (3)1, (3)3, (3)1, (3)3

Row 075 L -> R (3)2, (3)4, (3)2, (3)4

Row 076 L <- R (3)2, (3)4, (3)2, (3)4

Row 076 L -> R (3)1, (3)3, (3)1, (3)3

Row 077 L <- R (3)2, (3)4, (3)2, (3)4

Row 077 L -> R (3)1, (3)3, (3)1, (3)3

Row 078 L <- R (3)2, (3)4, (3)2, (3)4

Row 078 L -> R (3)1, (3)3, (3)1, (3)3

Row 079 L <- R (3)3, (3)1, (3)3, (3)1

Row 079 L -> R (3)4, (3)2, (3)4, (3)2

Row 080 L <- R (3)3, (3)1, (3)3, (3)1

Row 080 L -> R (3)4, (3)2, (3)4, (3)2

Row 081 L <- R (3)3, (3)1, (3)3, (3)1

Row 081 L -> R (3)4, (3)2, (3)4, (3)2

Row 082 L <- R (3)4, (3)2, (3)4, (3)2

Row 082 L -> R (3)3, (3)1, (3)3, (3)1

Row 083 L <- R (3)4, (3)2, (3)4, (3)2

Row 083 L -> R (3)3, (3)1, (3)3, (3)1

Row 084 L <- R (3)4, (3)2, (3)4, (3)2

Row 084 L -> R (3)3, (3)1, (3)3, (3)1

Row 085 L <- R (3)3, (3)1, (3)3, (3)1

Row 085 L -> R (3)2, (3)4, (3)2, (3)4

Row 086 L <- R (3)3, (3)1, (3)3, (3)1

Row 086 L -> R (3)2, (3)4, (3)2, (3)4

Row 087 L <- R (3)3, (3)1, (3)3, (3)1

Row 087 L -> R (3)2, (3)4, (3)2, (3)4

Row 088 L <- R (3)2, (3)4, (3)2, (3)4

Row 088 L -> R (3)1, (3)3, (3)1, (3)3

Row 089 L <- R (3)2, (3)4, (3)2, (3)4

Row 089 L -> R (3)1, (3)3, (3)1, (3)3

Row 090 L <- R (3)2, (3)4, (3)2, (3)4

Row 090 L -> R (3)1, (3)3, (3)1, (3)3

Row 091 L <- R (3)1, (3)3, (3)1, (3)3

Row 091 L -> R (3)4, (3)2, (3)4, (3)2

Row 092 L <- R (3)1, (3)3, (3)1, (3)3

```

-----
Row 092 L -> R (3)4, (3)2, (3)4, (3)2
-----
Row 093 L <- R (3)1, (3)3, (3)1, (3)3
-----
Row 093 L -> R (3)4, (3)2, (3)4, (3)2
-----
Row 094 L <- R (3)4, (3)2, (3)4, (3)2
-----
Row 094 L -> R (3)3, (3)1, (3)3, (3)1
-----
Row 095 L <- R (3)4, (3)2, (3)4, (3)2
-----
Row 095 L -> R (3)3, (3)1, (3)3, (3)1
-----
Row 096 L <- R (3)4, (3)2, (3)4, (3)2
-----
Row 096 L -> R (3)3, (3)1, (3)3, (3)1
-----
Row 097 L <- R (3)1, (3)3, (3)1, (3)3
-----
Row 097 L -> R (3)2, (3)4, (3)2, (3)4
-----
Row 098 L <- R (3)1, (3)3, (3)1, (3)3
-----
Row 098 L -> R (3)2, (3)4, (3)2, (3)4
-----
Row 099 L <- R (3)1, (3)3, (3)1, (3)3
-----
Row 099 L -> R (3)2, (3)4, (3)2, (3)4
-----
Row 100 L <- R (3)2, (3)4, (3)2, (3)4
-----
Row 100 L -> R (2)1, (1)2, (3)3, (3)1, (3)3
-----
Row 101 L <- R (3)2, (3)4, (3)2, (3)4
-----
Row 101 L -> R (3)1, (3)3, (3)1, (3)3
-----
Row 102 L <- R (3)2, (3)4, (3)2, (3)4
-----
Row 102 L -> R (3)1, (3)3, (3)1, (3)3
-----

```