

Artemis by FusionBeads.com



Approximate finished length: 2.25 inches

Beads and other products needed for one pair of earrings:

- 1 gram - Size 15 Opaque Matte Asparagus Delica Beads - DBS0391 (15DB0391)
- 1 gram - Size 15 Matte Eggshell Delica Beads - DBS0352 (15DB0352)
- 2 - 47.5x7mm Natural Brass Straight Arrow Charms by Vintaj (NB0748)
- 1 pair - 20mm Natural Brass Hook Ear Wires by Vintaj (NB0177)
- 1 - Crystal Clear FireLine Braided Bead Thread .006 diameter, 4 lb/Size B (SM4428)

Tools needed to complete the earrings:

- Size 12 Tulip Beading Needles (TL2837)
- Synthetic Beeswax, 2 ounces (TL1026)
- Beading Scissors 1-1/4 in. Blade (TL0302)
- Chain nose pliers

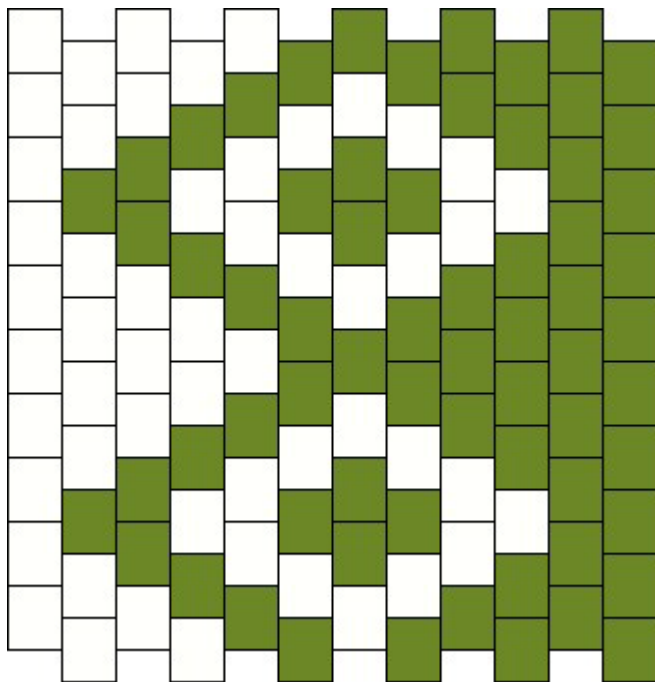
Beading Techniques needed to complete the earrings:

- Flat Peyote Stitch - Even Count
- Flat Peyote Stitch Tube Bead
- Attaching an Ear Wire

Instructions to complete “Artemis” earrings:

Step 1

Thread a needle with 3 feet of beading thread, leaving a 12-inch tail. Wax the thread. Using flat peyote stitch (see Flat Peyote Stitch – Even Count Technique), weave the pattern below.



Graph made with Beader's Canvas software (BK2597)

Step 2

Roll the peyote piece around one arrow charm, and stitch the piece into a tube (see Flat Peyote Stitch Tube Bead Technique).

Step 3

Open the loop on one ear wire (see Attaching an Ear Wire Technique), and attach it to the hole in the charm. Close the loop.

Step 4

Repeat Steps 1 – 3 for the second earring.

For step-by-step photos and instructions on these and other techniques, visit FusionBeads.com and select Beading Techniques from the top navigation bar. You'll find more Inspiration jewelry ideas at FusionBeads.com!

Text Pattern:

Color Key:

1 - Size 15 Matte Eggshell Delica Beads - DBS0352

2 - Size 15 Opaque Matte Asparagus Delica Beads - DBS0391

Row 001 L -> R (4)1, (2)2, (1)1, (5)2

Row 002 L <- R (2)2, (2)1, (1)2, (1)1

Row 002 L -> R (1)1, (1)2, (1)1, (1)2, (1)1, (1)2

Row 003 L <- R (1)2, (1)1, (2)2, (1)1, (1)2

Row 003 L -> R (1)1, (1)2, (1)1, (1)2, (1)1, (1)2

Row 004 L <- R (2)2, (2)1, (1)2, (1)1

Row 004 L -> R (2)1, (1)2, (1)1, (2)2

Row 005 L <- R (4)2, (2)1

Row 005 L -> R (3)1, (3)2

Row 006 L <- R (4)2, (2)1

Row 006 L -> R (2)1, (1)2, (1)1, (2)2

Row 007 L <- R (2)2, (2)1, (1)2, (1)1

Row 007 L -> R (1)1, (1)2, (1)1, (1)2, (1)1, (1)2

Row 008 L <- R (1)2, (1)1, (2)2, (1)1, (1)2

Row 008 L -> R (1)1, (1)2, (1)1, (1)2, (1)1, (1)2

Row 009 L <- R (2)2, (2)1, (1)2, (1)1

Row 009 L -> R (2)1, (1)2, (1)1, (2)2

Row 010 L <- R (4)2, (2)1

Row 010 L -> R (3)1, (3)2
