



How To Make a Flower Blossom Necklace



We look forward to bringing you exclusive innovations
and distinctive products this year and beyond.

www.nunndesign.com

SUPPLIES NEEDED:

- 1 piece 37x12.5mm Antique Gold Plated Pewter Horizontal Rectangle Stamping Pendant by Nunn Design (PE3572)
- 1 piece 21 Gauge Gold Plated Base Metal 2 inch Head Pin with 2mm Ball (BM2503)
- 1 piece 12.5mm Antique Gold Plated Brass Petal Bead Cap by Nunn Design (BM3313)
- 1 piece 8.5mm Antique Gold Plated Brass Daisy Bead Cap by Nunn Design (BM3321)
- 1 piece 5810 6mm Cream Swarovski Crystal Pearl Bead (PL5301)
- 16" 2.2mm Gold-Filled Flat Cable Chain (CN1126)
- 4 pieces 6mm Antique Gold Plated Brass 16 Gauge Textured Open Jump Ring (BM3325)
- 1 set 25mm Antique Gold Plated Pewter Hammered Toggle Clasp by Nunn Design (PE3410)

TOOLS NEEDED:

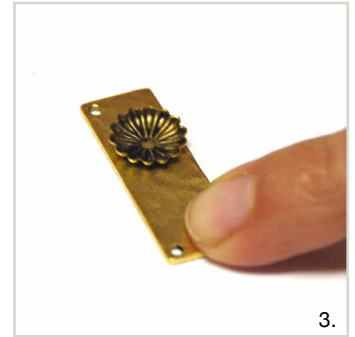
- 1 Pair of 5.5 inch Maxi Shear Flush Cutter (TL2254)
- 2 Pair of 5 inch Basic Flat Nose Pliers (TL0103)
- 1 pair of 1.25mm Metal Hole Punch Pliers (TL2242)



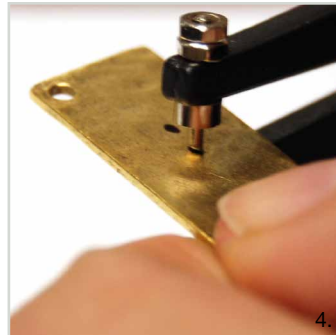
1.



2.



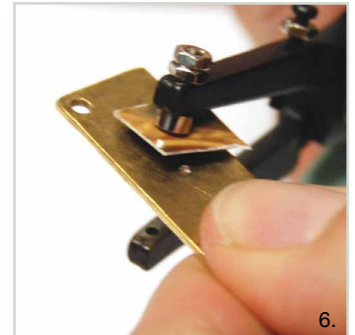
3.



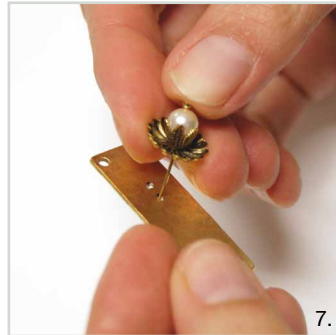
4.



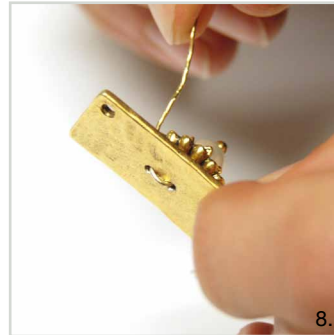
5.



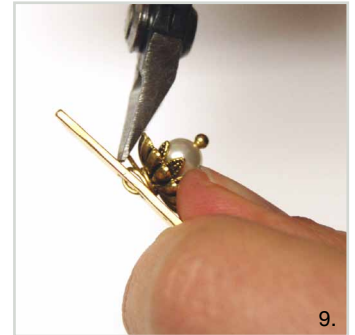
6.



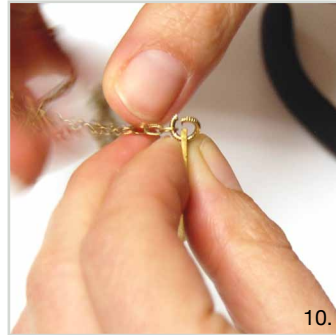
7.



8.



9.



10.



11.



12.



13.



How To Make a Flower Blossom Necklace



Making the Flower Blossom Pendant

STEP 1: (Image 3)

Decide where the blossom (the 12.5m Antique Gold Plated Brass Petal Bead Cap) will go on the Hammered Flat Tag. I chose to position mine slightly off center. Use a Sharpie and mark two dots for holes directly under the Petal Bead Cap approximately 1/8" apart.

STEP 2: (Image 4)

Pewter is a very soft metal and can mar easily from the Metal Hole Punch tool. I like to create a barrier with a piece of card stock prior to punching the holes. However, it can be difficult see the Sharpie marks once the card stock barrier is in place, so before using the card stock, create a small indentation on the metal tag over the Sharpie marks using the 1.25mm Metal Hole Punch Pliers. Gently create a small divot, avoid punching all the way through.

STEP 3: (Image 5)

Tear off a small piece of card stock. Using your 1.25 Metal Hole Punch, punch a hole in the card stock. You will keep this piece of card stock in the hole punch to prevent marring of the tag as discussed in Step 2. This will be used as the barrier mentioned in step 2.

STEP 4: (Image 6)

Now you will feel your way for the small divot you made in step 2 with your Metal Hole Punch (see what I'm talking about? It is really hard to see the marks on your tag with the card in the way). Once the hole punch is in line with the divot, punch your hole all the way through the tag. Repeat for the second hole.

STEP 5: (Image 7)

Thread the 6mm Cream Swarovski Crystal Pearl Bead, 8.5mm Antique Gold Plated Brass Daisy Bead Cap and 12.5mm Antique Gold Plated Brass Petal Bead Cap by Nunn Design onto the 21 Gauge Gold Plated Base Metal 2 inch Head Pin with 2mm Ball. Thread the pearl and bead cap blossom through one of the holes in the Hammered Flat Tag.

STEP 6: (Image 8)

Turn over the Hammered Flat Tag and thread the Head Pin up through the second hole. (Honestly, this wasn't as easy as I make it look. It might take some monkey wrenching to get that bead cap blossom with the head pin to lay flat on the Hammered Flat Tag while you thread it through the backside and pull it back up through to the front. I think I said a bad word once...sshhh.)

STEP 7: (Image 9)

Once the Head Pin is threaded through the Hammered Flat Tag and through the second hole, wrap the excess wire around the base of the Bead Cap Blossom. If you feel you have too much, you can trim the Head Pin with your Maxi Shear Flush Cutters.

Assembling the Chain onto the Hammered Flower Blossom

STEP 8: (Image 10)

Using your 2 pairs of 5 inch Basic Flat Nose Pliers, open up one of the 6mm Antique Gold Plated Brass 16 Gauge Textured Open Jump Ring and thread one end of the

How To Make a Flower Blossom Necklace

16" 2.2mm Gold-Filled Flat Cable Chain. Then thread the jump ring with attached chain onto the Hammered Flat Tag. Repeat this for the other side.

STEP 9: (Image 11)

Determine the center mark on the 16" of Flat Cable Chain and cut the chain with your Maxi Shear Flush Cutters.

STEP 10: (Image 12)

Open up another 6mm Antique Gold Plated Brass 16 Gauge Textured Open Jump Rings and thread it onto the end of the 16" 2.2mm Gold-Filled Flat Cable Chain cut in step 9 along with the Hammered Toggle Bar part of the 25mm Antique Gold Plated Pewter Hammered Toggle Clasp set. Repeat for the Hammered Toggle Ring on the other side.

STEP 11: (Image 13)

There you have it! Sweet huh?

We have a lot to offer and would love for you to stay connected!

- Take a moment to cruise through our blog! --> www.nunndesign.com/blog
- Follow Nunn Design on Pinterest! --> www.pinterest.com/nunndesign
- Please Like us on Facebook. --> www.facebook.com/nunndesign