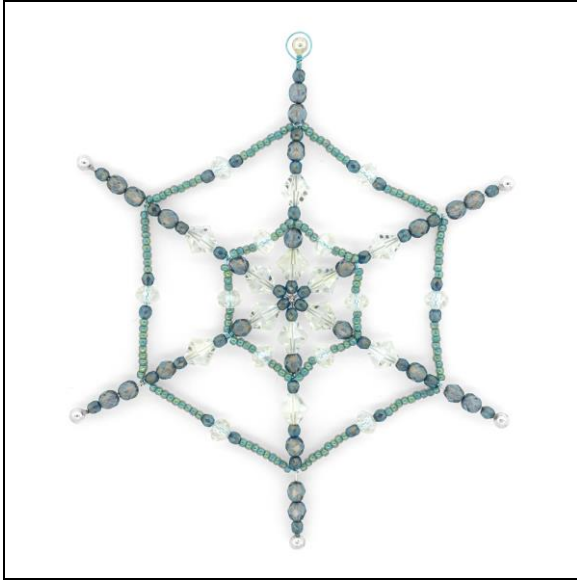


# Ice Dreams by FusionBeads.com



## **Beads and other products needed for one snowflake:**

10 grams - Size 8 Teal Lined Light Sapphire AB Round Japanese Seed Beads by Toho - 1833 (SB5396)  
42 beads - 4mm Azurite Halo Fire Polished Round Glass Beads (FP3619)  
24 beads - 6mm Shadows Halo Fire Polished Round Glass Beads (FP3708)  
12 - 8mm Crystal Swarovski Crystal Rondelle Bead - 5040 (SC1200)  
12 - 10mm Crystal Swarovski Crystal Bicone Bead - 5328 (10BI1100)  
6 - 5mm Silver Plated Memory Wire End Caps (BM3573)  
1 - 6 inch Wire Snowflake Form (SM4202)  
4 feet - 24 Gauge Round Ice Blue Artistic Wire (AW2124)

## **Tools needed to complete the snowflake:**

Round nose pliers  
Wire Cutters  
5 Minute Epoxy (TL1938)

## **Beading Techniques needed to complete the snowflake:**

Beaded Snowflake Form

## **Instructions to complete “Ice Dreams” snowflake:**

### **Step 1**

Place these beads in the following sequence onto any one spoke of the snowflake form:

- 1 – 4mm Azurite Halo fire polished bead
- 1 – 10mm Crystal bicone bead
- 1 – 6mm Shadows Halo fire polished bead
- 1 – 4mm Azurite Halo fire polished bead
- 1 – 10mm Crystal bicone bead
- 1 – 4mm Azurite Halo fire polished bead
- 1 – 6mm Shadows Halo fire polished bead
- 1 – 4mm Azurite Halo fire polished bead
- 2 – 6mm Shadows Halo fire polished beads
- 1 – 4mm Azurite Halo fire polished bead

### **Step 2**

Apply a small drop of 5 Minute Epoxy to the inside of one end cap. Place the end of the spoke into the end cap. Allow the epoxy to set.

### **Step 3**

Repeat Steps 1 – 2 with each of the next four spokes.

### **Step 4**

On the last spoke, repeat Step 1.

### **Step 5**

To make the top loop, anchor a 6-inch length of wire by wrapping one end three times around the spoke near the last bead strung. Form the wire into a circle about 3/8-inch in diameter around the end of the spoke, then wrap it a few more times around the spoke. Trim the wire close to the spoke.

### **Step 6**

Repeat Step 2.

### **Step 7**

Anchor one end of a 1.5-foot length of wire to any one spoke between the third and fourth beads strung (counting from the center of the spoke).

### **Step 8**

String these beads onto the wire:

- 4 – size 8 seed beads
- 1 – 8mm Crystal rondelle
- 4 – size 8 seed beads

Wrap the wire once around the next spoke between the corresponding third and fourth beads.

### **Step 9**

Repeat Step 8 five times around the snowflake. Anchor the wire around the last spoke, and trim the wire.

### **Step 10**

In the same manner as in Step 7, anchor a 2-foot length of wire to any one spoke between the eighth and ninth beads strung (counting from the center of the spoke).

### **Step 11**

String these beads onto the wire:

- 9 – size 8 seed beads
- 1 – 4mm Azurite Halo fire polished bead
- 1 – 8mm Crystal rondelle
- 1 – 4mm Azurite Halo fire polished bead
- 9 – size 8 seed beads

Wrap the wire once around the next spoke between the corresponding beads on that spoke.

**Step 12**

Repeat Step 11 five times around the snowflake. Anchor the wire around the last spoke, and trim the wire.

**Step 13**

Open the loop on one ear wire (see Attaching an Ear Wire Technique), and attach it to the wire loop made in Step 5. Close the loop.

***For step-by-step photos and instructions on these and other techniques, visit [FusionBeads.com](http://FusionBeads.com) and select Beading Techniques from the top navigation bar. You'll find more Inspiration jewelry ideas at [FusionBeads.com](http://FusionBeads.com)!***