

Paradise Sparkle by FusionBeads.com



Approximate finished length: 1.25 inches

Beads and other products needed for one pair of earrings:

2 - 14x9.5mm Crystal Paradise Shine Swarovski Crystal Emerald Cut Beads (SK1857)

4 - 3x5mm Antique Gold Plated Pewter Leaf Bead Caps by TierraCast® (GP2111)

2 - 22 gauge Gold Plated Brass 2 inch Head Pins (BM2704)

1 pair - 10.5mm Gold-Filled Ear Wires with Front Loop by TierraCast® (GF2106)

Tools needed to complete the earrings:

Round nose pliers

Chain nose pliers

Wire cutters



Beading Techniques needed to complete the earrings:

Wire Wrapping

Attaching an Ear Wire

Instructions to complete “Paradise Sparkle” earrings:

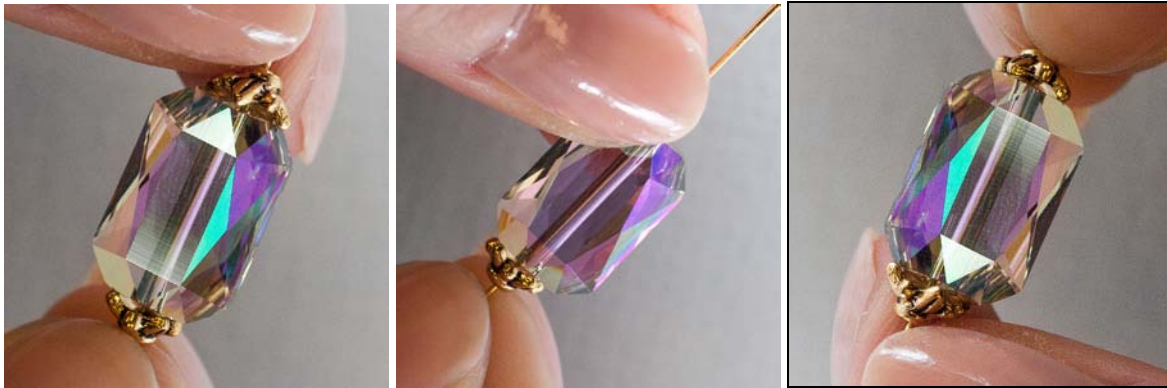
Step 1

Place these beads onto one head pin, making one unit:

1 – bead cap (narrow end toward the head)

1 – 14x9.5mm Crystal Paradise Shine emerald cut bead

1 – bead cap (wide end toward the previous bead)



Step 2

Make a wire wrapped loop (see Wire Wrapping Technique) at the open end of the head pin.



Step 3

Open the loop on one ear wire (see Attaching an Ear Wire Technique), and attach it to the wire wrapped loop on the unit made in Step 2. Close the loop.



Step 4

Repeat Steps 1 – 3 for the second earring.



For step-by-step photos and instructions on these and other techniques, visit FusionBeads.com and select Beading Techniques from the top navigation bar. You'll find more Inspiration jewelry ideas at FusionBeads.com!