

Aztec-Inspired Loom by FusionBeads.com



Approximate finished length: 6 1/2 inches (adjustable to 8 1/2 inches)

Beads and other products needed for one bracelet:

- 1 - Size 11 Matte Opaque Glaze Rainbow Yellow Delica Beads - DB2302 - (11DB2302)
- 1 - Size 11 Matte Opaque Glaze Cream Delica Beads - DB2284 - (11DB2284)
- 1 - Size 11 Matte Opaque Glaze Pecan Delica Beads - DB2286 - (11DB2286)
- 1 - Size 11 Matte Opaque Glaze Rainbow Peacock Delica Beads - DB2315 - (11DB2315)
- 1 - Size 11 Matte Opaque Glaze Rainbow Dark Teal Delica Beads - DB2316 - (11DB2316)
- 1 - Size 11 Matte Opaque Glaze Rainbow Navy Blue Delica Beads - DB2319 - (11DB2319)
- 1 - Size 11 Matte Opaque Glaze Rainbow Ivory Delica Beads - DB2301 - (11DB2301)
- 1 - Precious Metal 4mm Flat Oval Cable Chain - Sterling Silver - (CN0260)
- 1 - Precious Metal Oval Lobster Claw Clasp - Sterling Silver - 9mm - (SS4075)
- 2 - Base Metal Slide End Tube by Miyuki - Silver - 20mm - (BM3577)
- 2 - 4mm Sterling Silver 19 Gauge Open Jump Ring - (SS3944)
- 1 - FireLine Braided Bead Thread - Crystal Clear - 6 lb - 15 yard spool - (SM6281)

Tools needed to complete the bracelet:

Chain Nose Pliers
Wire Cutters
Xuron Thread and Fiber Scissors (TL3000)
Tulip Beading Needles - Size 11 (TL2648)
Ricks Beading Loom (TL2862)

Beading Techniques needed to complete the bracelet:

Basic Beading on a Loom
Opening and Closing a Jump Ring

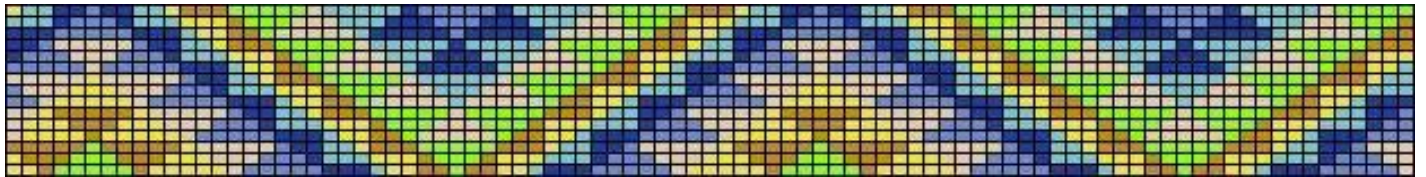
Instructions to complete “Aztec-Inspired Loom” bracelet:

Step 1

Prepare the loom as instructed in the Basic Beading on a Loom Technique. (Images shown us a Rick’s Beading Loom)

Step 2

Follow the pattern below to weave a 5 7/8-inch-long piece of beadwork. Finish the beadwork as shown in the technique.

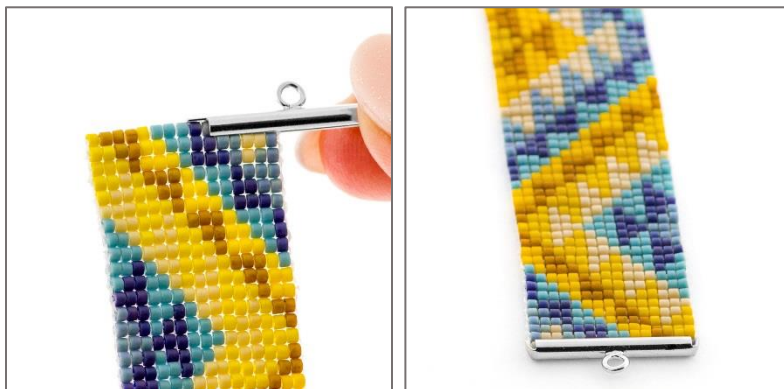


Graph made with Beader’s Canvas software (BK2597)



Step 3

To attach one slide end tube to one end of the beadwork, first close one tab on the tube with chain nose pliers. Carefully slide the edge of the beadwork down into the tube. When the beadwork is inside the tube completely, use chain nose pliers to close the last tab on the tube.



Step 4

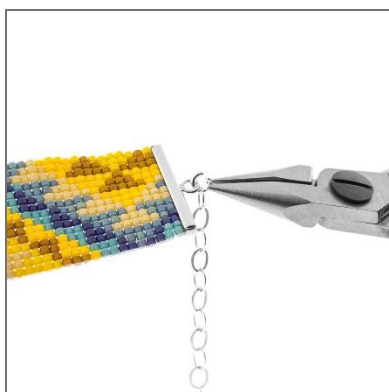
Repeat Step 3 with the second slide end tube on the other end of the beadwork.

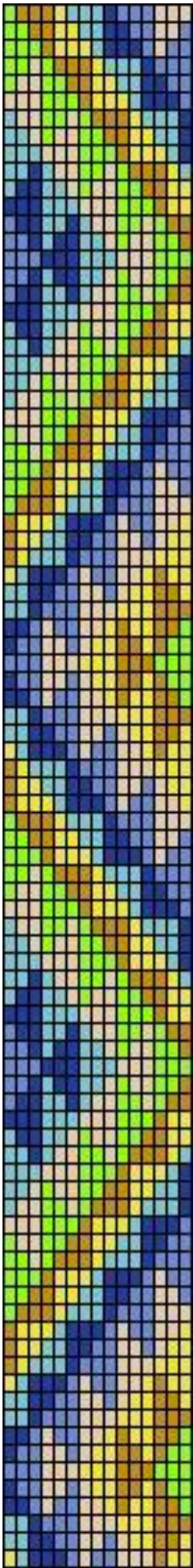
Step 5

Open one jump ring (see Opening and Closing a Jump Ring Technique). Use the jump ring to attach the loop on the lobster claw clasp to one slide end tube. Close the jump ring.

**Step 6**

Open one jump ring (see Opening and Closing a Jump Ring Technique). Use the jump ring to attach 2 inches of chain the other slide end tube. Close the jump ring.





Index ID	Count	Finish	Description
1	11DB2284 (197)	Matte Opaque Glaze	Cream
2	11DB2319 (168)	Matte Opaque Glaze	Rainbow Navy Blue
3	11DB2315 (204)	Matte Opaque Glaze	Rainbow Peacock
4	11DB2302 (180)	Matte Opaque Glaze	Rainbow Yellow
5	11DB2316 (171)	Matte Opaque Glaze	Rainbow Dark Teal
6	11DB2301 (244)	Matte Opaque Glaze	Rainbow Ivory
7	11DB2286 (171)	Matte Opaque Glaze	Pecan

 Row 001 L -> R (1)1, (1)3, (3)2, (1)5, (1)6, (2)5, (3)6, (1)7, (2)1

Row 002 L -> R (2)3, (2)2, (2)5, (2)6, (1)5, (1)6, (2)1, (2)7, (1)1

Row 003 L -> R (2)3, (1)2, (3)5, (3)6, (3)1, (3)7

Row 004 L -> R (2)2, (1)5, (1)6, (2)5, (2)6, (1)1, (1)7, (2)1, (2)7, (1)4

Row 005 L -> R (1)2, (2)5, (2)6, (1)5, (1)6, (2)1, (2)7, (1)1, (1)7, (2)4

Row 006 L -> R (3)5, (3)6, (3)1, (3)7, (3)4

Row 007 L -> R (1)2, (2)5, (2)6, (1)5, (1)6, (2)1, (2)7, (1)1, (1)7, (2)4

Row 008 L -> R (2)2, (1)5, (1)6, (2)5, (2)6, (1)1, (1)7, (2)1, (2)7, (1)4

Row 009 L -> R (2)3, (1)2, (3)5, (3)6, (3)1, (3)7

Row 010 L -> R (2)3, (2)2, (2)5, (2)6, (1)5, (1)6, (2)1, (2)7, (1)1

Row 011 L -> R (1)1, (1)3, (3)2, (1)5, (1)6, (2)5, (2)6, (1)1, (1)7, (2)1

Row 012 L -> R (1)7, (1)1, (3)3, (1)2, (3)5, (3)6, (3)1

Row 013 L -> R (1)7, (2)1, (2)3, (2)2, (2)5, (2)6, (1)5, (1)6, (2)1

Row 014 L -> R (1)7, (3)1, (1)3, (3)2, (1)5, (1)6, (2)5, (2)6, (1)1

Row 015 L -> R (1)4, (3)7, (1)1, (3)3, (1)2, (3)5, (3)6

Row 016 L -> R (2)4, (2)7, (2)1, (2)3, (2)2, (2)5, (2)6, (1)5

Row 017 L -> R (3)4, (1)7, (3)1, (1)3, (3)2, (1)5, (1)6, (2)5

Row 018 L -> R (2)4, (1)6, (1)4, (3)7, (1)1, (3)3, (1)2, (3)5

Row 019 L -> R (1)4, (2)6, (2)4, (2)7, (2)1, (2)3, (2)2, (2)5

Row 020 L -> R (3)6, (3)4, (1)7, (3)1, (1)3, (3)2, (1)5

Row 021 L -> R (1)3, (2)6, (2)4, (1)6, (1)4, (3)7, (1)1, (3)3, (1)2

Row 022 L -> R (2)3, (1)6, (1)4, (2)6, (2)4, (2)7, (2)1, (2)3, (1)2

Row 023 L -> R (3)3, (3)6, (3)4, (1)7, (3)1, (1)3, (1)2

Row 024 L -> R (2)3, (1)2, (1)3, (2)6, (2)4, (1)6, (1)4, (3)7, (1)1, (1)3

Row 025 L -> R (1)3, (2)2, (2)3, (1)6, (1)4, (2)6, (2)4, (2)7, (2)1

Row 026 L -> R (3)2, (3)3, (3)6, (3)4, (1)7, (2)1

Row 027 L -> R (1)5, (2)2, (2)3, (1)2, (1)3, (2)6, (2)4, (1)6, (1)4, (2)7

Row 028 L -> R (2)5, (1)2, (1)3, (2)2, (2)3, (1)6, (1)4, (2)6, (2)4, (1)7

Row 029 L -> R (3)5, (3)2, (3)3, (3)6, (3)4

Row 030 L -> R (2)5, (1)2, (1)3, (2)2, (2)3, (1)6, (1)4, (2)6, (2)4, (1)7

Row 031 L -> R (1)5, (2)2, (2)3, (1)2, (1)3, (2)6, (2)4, (1)6, (1)4, (2)7

Row 032 L -> R (3)2, (3)3, (3)6, (3)4, (1)7, (2)1

Row 033 L -> R (1)3, (2)2, (2)3, (1)6, (1)4, (2)6, (2)4, (2)7, (2)1

Row 034 L -> R (2)3, (1)2, (1)3, (2)6, (2)4, (1)6, (1)4, (3)7, (1)1, (1)3

Row 035 L -> R (3)3, (3)6, (3)4, (1)7, (3)1, (1)3, (1)2

Row 036 L -> R (2)3, (1)6, (1)4, (2)6, (2)4, (2)7, (2)1, (2)3, (1)2

Row 037 L -> R (1)3, (2)6, (2)4, (1)6, (1)4, (3)7, (1)1, (3)3, (1)2

Row 038 L -> R (3)6, (3)4, (1)7, (3)1, (1)3, (3)2, (1)5

Row 039 L -> R (1)4, (2)6, (2)4, (2)7, (2)1, (2)3, (2)2, (2)5

Row 040 L -> R (2)4, (1)6, (1)4, (3)7, (1)1, (3)3, (1)2, (3)5

Row 041 L -> R (3)4, (1)7, (3)1, (1)3, (3)2, (1)5, (1)6, (2)5

Row 042 L -> R (2)4, (2)7, (2)1, (2)3, (2)2, (2)5, (2)6, (1)5

Row 043 L -> R (1)4, (3)7, (1)1, (3)3, (1)2, (3)5, (3)6

Row 044 L -> R (1)7, (3)1, (1)3, (3)2, (1)5, (1)6, (2)5, (2)6, (1)1

Row 045 L -> R (1)7, (2)1, (2)3, (2)2, (2)5, (2)6, (1)5, (1)6, (2)1

Row 046 L -> R (1)7, (1)1, (3)3, (1)2, (3)5, (3)6, (3)1

Row 047 L -> R (1)1, (1)3, (3)2, (1)5, (1)6, (2)5, (2)6, (1)1, (1)7, (2)1

Row 048 L -> R (2)3, (2)2, (2)5, (2)6, (1)5, (1)6, (2)1, (2)7, (1)1

Row 049 L -> R (2)3, (1)2, (3)5, (3)6, (3)1, (3)7

Row 050 L -> R (2)2, (1)5, (1)6, (2)5, (2)6, (1)1, (1)7, (2)1, (2)7, (1)4

Row 051 L -> R (1)2, (2)5, (2)6, (1)5, (1)6, (2)1, (2)7, (1)1, (1)7, (2)4

Row 052 L -> R (3)5, (3)6, (3)1, (3)7, (3)4

Row 053 L -> R (1)2, (2)5, (2)6, (1)5, (1)6, (2)1, (2)7, (1)1, (1)7, (2)4

Row 054 L -> R (2)2, (1)5, (1)6, (2)5, (2)6, (1)1, (1)7, (2)1, (2)7, (1)4

Row 055 L -> R (2)3, (1)2, (3)5, (3)6, (3)1, (3)7

Row 056 L -> R (2)3, (2)2, (2)5, (2)6, (1)5, (1)6, (2)1, (2)7, (1)1

Row 057 L -> R (1)1, (1)3, (3)2, (1)5, (1)6, (2)5, (2)6, (1)1, (1)7, (2)1

Row 058 L -> R (1)7, (1)1, (3)3, (1)2, (3)5, (3)6, (3)1

Row 059 L -> R (1)7, (2)1, (2)3, (2)2, (2)5, (2)6, (1)5, (1)6, (2)1

Row 060 L -> R (1)7, (3)1, (1)3, (3)2, (1)5, (1)6, (2)5, (2)6, (1)1

Row 061 L -> R (1)4, (3)7, (1)1, (3)3, (1)2, (3)5, (3)6

Row 062 L -> R (2)4, (2)7, (2)1, (2)3, (2)2, (2)5, (2)6, (1)5

Row 063 L -> R (3)4, (1)7, (3)1, (1)3, (3)2, (1)5, (1)6, (2)5

Row 064 L -> R (2)4, (1)6, (1)4, (3)7, (1)1, (3)3, (1)2, (3)5

Row 065 L -> R (1)4, (2)6, (2)4, (2)7, (2)1, (2)3, (2)2, (2)5

Row 066 L -> R (3)6, (3)4, (1)7, (3)1, (1)3, (3)2, (1)5

Row 067 L -> R (1)3, (2)6, (2)4, (1)6, (1)4, (3)7, (1)1, (3)3, (1)2

Row 068 L -> R (2)3, (1)6, (1)4, (2)6, (2)4, (2)7, (2)1, (2)3, (1)2

Row 069 L -> R (3)3, (3)6, (3)4, (1)7, (3)1, (1)3, (1)2

Row 070 L -> R (2)3, (1)2, (1)3, (2)6, (2)4, (1)6, (1)4, (3)7, (1)1, (1)3

Row 071 L -> R (1)3, (2)2, (2)3, (1)6, (1)4, (2)6, (2)4, (2)7, (2)1

Row 072 L -> R (3)2, (3)3, (3)6, (3)4, (1)7, (2)1

Row 073 L -> R (1)5, (2)2, (2)3, (1)2, (1)3, (2)6, (2)4, (1)6, (1)4, (2)7

Row 074 L -> R (2)5, (1)2, (1)3, (2)2, (2)3, (1)6, (1)4, (2)6, (2)4, (1)7

Row 075 L -> R (3)5, (3)2, (3)3, (3)6, (3)4

Row 076 L -> R (2)5, (1)2, (1)3, (2)2, (2)3, (1)6, (1)4, (2)6, (2)4, (1)7

Row 077 L -> R (1)5, (2)2, (2)3, (1)2, (1)3, (2)6, (2)4, (1)6, (1)4, (2)7

Row 078 L -> R (3)2, (3)3, (3)6, (3)4, (1)7, (2)1

Row 079 L -> R (1)3, (2)2, (2)3, (1)6, (1)4, (2)6, (2)4, (2)7, (2)1

Row 080 L -> R (2)3, (1)2, (1)3, (2)6, (2)4, (1)6, (1)4, (3)7, (1)1, (1)3

Row 081 L -> R (3)3, (3)6, (3)4, (1)7, (3)1, (1)3, (1)2

Row 082 L -> R (2)3, (1)6, (1)4, (2)6, (2)4, (2)7, (2)1, (2)3, (1)2

Row 083 L -> R (1)3, (2)6, (2)4, (1)6, (1)4, (3)7, (1)1, (3)3, (1)2

Row 084 L -> R (3)6, (3)4, (1)7, (3)1, (1)3, (3)2, (1)5

Row 085 L -> R (1)4, (2)6, (2)4, (2)7, (2)1, (2)3, (2)2, (2)5

Row 086 L -> R (2)4, (1)6, (1)4, (3)7, (1)1, (3)3, (1)2, (3)5

Row 087 L -> R (3)4, (1)7, (3)1, (1)3, (3)2, (1)5, (1)6, (2)5

Row 088 L -> R (2)4, (2)7, (2)1, (2)3, (2)2, (2)5, (2)6, (1)5

Row 089 L -> R (1)4, (3)7, (1)1, (3)3, (1)2, (3)5, (3)6

For step-by-step photos and instructions on these and other techniques, visit FusionBeads.com and select Beading Techniques from the top navigation bar. You'll find more Inspiration jewelry ideas at FusionBeads.com!