

Crystal Wrap by FusionBeads.com



Approximate finished length: 2 inches

Beads and other products needed for one pair of earrings:

- 2 - 3mm Hyacinth Swarovski Crystal Bicone Bead - 5328 - (03BI1103)
- 6 - 3mm Indicolite Swarovski Crystal Bicone Bead - 5328 - (03BI1153)
- 4 - 3mm Fuchsia Swarovski Crystal Bicone Bead - 5328 - (03BI1107)
- 2 - 3mm Tangerine Swarovski Crystal Bicone Bead - 5328 - (03BI1422)
- 4 - 3mm Coral Pearl Swarovski Crystal Round Pearl Bead - 5810 - (PL6676)
- 4 - 8x6mm Light Coral Swarovski Crystal Oval Rivoli Fancy Stone - 4122 - (SK2539)
- 2 - 12mm Peony Pink Swarovski Crystal Square Cushion Fancy Stone - 4470 - (SK2518)
- 2 - 14x10mm Azure Blue Swarovski Crystal Pear Shaped Fancy Stone - 4320 - (SK2557)
- 4 - 8x6mm Rhodium Setting for #4122 Swarovski Crystal Oval Rivoli Fancy Stone - (BM5254)
- 2 - 12mm Rhodium Setting for #4470 Swarovski Crystal Square Cushion Fancy Stone - (BM5024)
- 2 - 14x10mm Rhodium Setting for #4320 Swarovski Crystal Pear Shaped Fancy Stone - (BM5018)
- 2 - Precious Metal Flat Teardrop Wire Component - Sterling Silver - 40mm - (SS4318)
- 1 - Precious Metal French Ear Wire with 2mm Bead by TierraCast® - Sterling Silver - 14mm - (SS2601)
- 1 - Round Artistic Wire - Tarnish Resistant Silver - 26 gauge - (AW2157)
- 1 - Tapered Nylon Jaw Pliers - (TL2468)

Tools needed to complete the earrings:

- Chain nose pliers
- Wire cutters
- Tapered Nylon Jaw Pliers (TL2468)

Beading Techniques needed to complete the earrings:

- Covering a Component – Surface
- Attaching an Ear Wire Technique
- Using Swarovski Crystal Stones with Settings



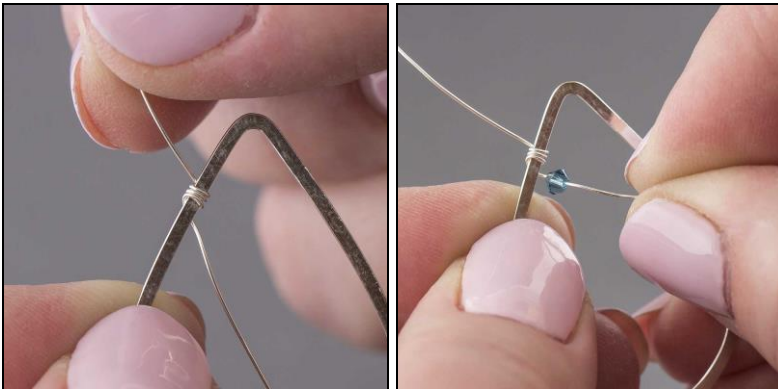
Instructions to complete “Crystal Wrap” earrings:

Tip

These earrings include a variation of the Cover a Component – Surface Technique. If you are not familiar with the technique, please read through the steps first before beginning these earrings.

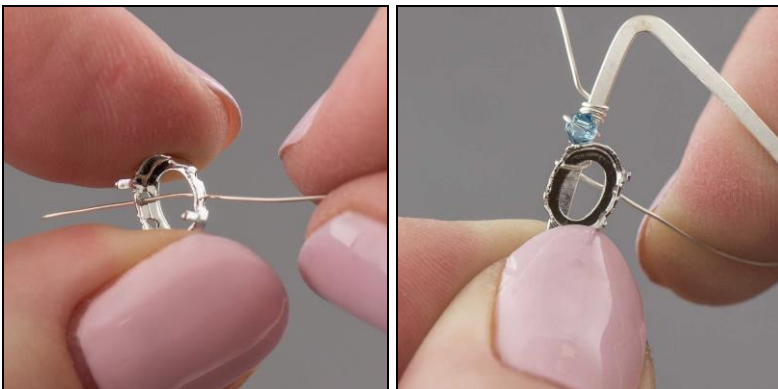
Step 1

Anchor about a 40-inch length of 26 gauge wire to the teardrop component with three wraps (see Covering a Component – Surface). String one 3mm Indicolite crystal bicone bead so that it sits on the edge of the component, and wrap the wire once around the component to anchor the bead.



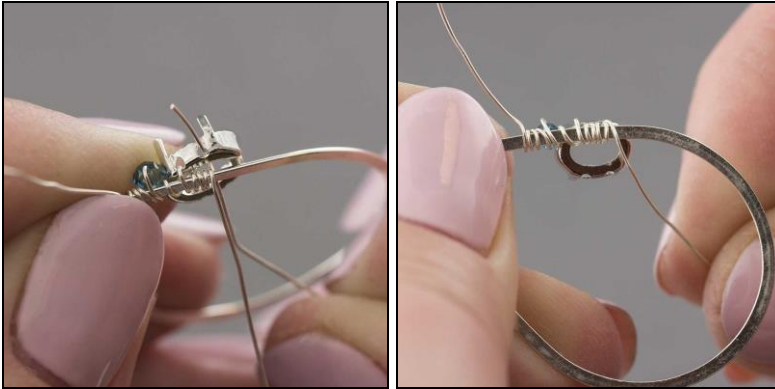
Step 2

String the wire up through the center of the 8x6mm oval setting and out the upper hole. Slide the setting down the wire so it sits on the edge of the component.



Step 3

Wrap the wire around the component and under the setting four times and then string the wire through the lower hole and continue to wrap the wire around the component three more times.



Step 4

In the same manner as in Step 1, continue covering the edge of the component with these beads in the following sequence, wrapping the wire once after each bead is placed:

1 – 3mm Tangerine crystal bicone

1 – 3mm Fuchsia crystal bicone

1 – 3mm Coral crystal pearl

After the last bead wrap the wire around the component five times.



Step 5

String the wire up through the center of the 14x10mm pear shaped setting with the wide end as the top and out the upper hole. Slide the setting down the wire so it sits on the edge of the component.



Step 6

In the same manner as Steps 3 and 4 continue wrapping the following settings and beads to the component:

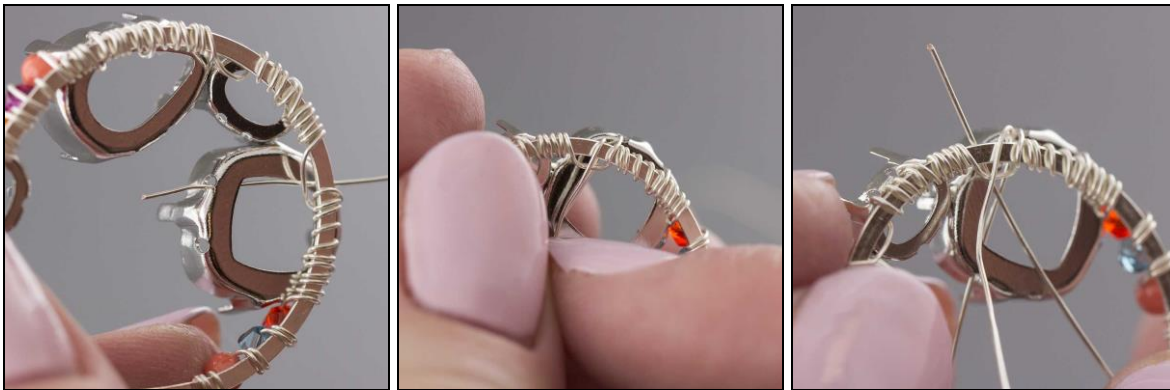
- 1 - 8x6mm oval setting
- 1 - 12mm square setting
- 1 - 3mm Hyacinth crystal bicone
- 1 - 3mm Indicolite crystal bicone
- 1 - 3mm Coral crystal pearl

Anchor the wire with three wraps and trim ends.



Step 7

In this next step you are going to make a wire bridge between the 12mm square setting and the 14x10mm pear shaped setting with bicones. Cut a 6-inch length of 26 gauge wire. Flip the component over and slide the wire between the component and the 12mm square setting and come up through the center of the setting and out the upper right hole. Anchor the wire around the component with a couple of wire wraps.



Step 8

String one 3mm Indicolite crystal bicone and one 3mm Fuchsia crystal bicone and then string the wire through the upper hole of the the 14x10mm pear shaped setting. Anchor the wire around the component with a couple of wire wraps.

**Step 9**

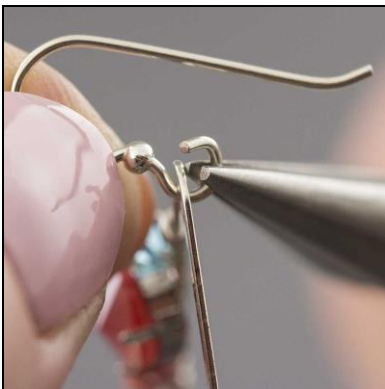
Place one 8x6mm Light Coral oval rivoli fancy stone into the oval setting. Use the nylon jaw pliers to gently bend the prongs over the top of the stone to secure (see Using Swarovski Crystal Stones with Settings Technique).

**Step 10**

Repeat Step 9 for the remaining fancy stones.

Step 11

Open the loop on one ear wire (see Attaching an Ear Wire Technique), and attach it to the top of the component. Close the loop.



Step 12

Repeat Steps 1 – 11 for the second earring.



*For step-by-step photos and instructions on these and other techniques, visit FusionBeads.com and select **Beading Techniques** from the top navigation bar. You'll find more **Inspiration jewelry ideas** at FusionBeads.com!*