

MATERIALS NEEDED

- 8gm 11° TOHO Demi Round
- 2gm 11° TOHO Round
- 8gm 8° TOHO Demi Round
- 1gm 15° TOHO Round
- Fireline or Wildfire

Optional Earrings:

- 2 Jump Rings
- 2 Earring Findings

COLORWAYS: Jet—Demi Round 11° Opaque Frosted Jet (TN-11-49F); Round 11° Opaque Jet (TR-11-49); Demi Round 8° Metallic Rainbow Iris (TN-08-86); Round 15° Opaque Jet (TR-15-49). Pink/Purple—Demi Round 11° Gold-Lustered Amethyst (TN-11-201); Round 11° Galvanized Pink Lilac (TR-11-553); Demi Round 8° Matte-Color Mauve Mocha (TN-08-703); Round 15° Opaque Lavender (TR-15-52). Copper/Teal—Demi Round 11° Matte-Color Mauve Mocha (TN-11-703); Round 11° Opaque-Lustered Turquoise (TR-11-132); Demi Round 8° Higher-Metallic Purple/Green Iris (TN-08-509); Round 15° Olympic Bronze (TR-15-224).



To make matching earrings for the bracelet, complete two Large Components and two Small Components. Attach the Large Components to the Small Components with loops of R11, R15, and D11. Attach a jump ring to the top of the Large Component with loops of R11, R15, and D11. Attach earring findings for a stylish matching set.

MASQUERADE

Design by TrendSetter Thomasin Alyxander

PATTERN OF THE MONTH



A fanciful component design featuring the latest seed bead innovation by TOHO BEADS.

DEMI
ROUND

Beads & Supplies Available from
Fusion Beads



About the Artist

Thomasin Alyxander

'Alyx' Thomasin Alyxander is the owner of Ubeadquitos in Windsor, California. She is the winner of the 2012 Starman Design Contest. Alyx is the author of 26 *Quick Stitched Elements* published by Kalmbach in 2015. Alyx believes anyone can bead. She offers classes in jewelry making, wire wrapping, pearl stringing, and bead weaving at her store. See more at www.Ubeadquitos.com

STARMAN
TRENDSETTERS

MANUFACTURING BEADS SINCE 1948
STARMAN

www.StarmanInc.com
(888) 683-BEAD [2323]

Masquerade

by TrendSetter Thomasin Alyxander

Copyright 2016 © Starman, Inc. and Artist.
Not licensed for digital distribution. Version 1.0

STARMAN
TRENDSETTERS

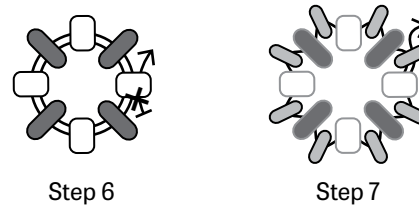
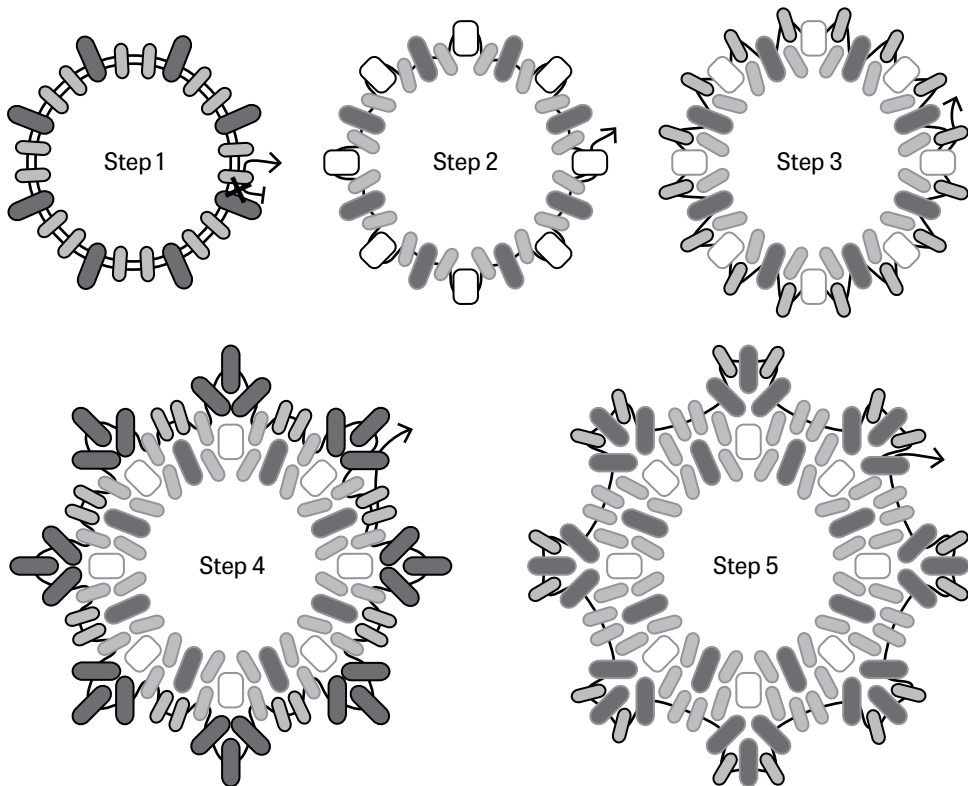
MATERIALS

8gm 11° TOHO Demi Round (D11)
2gm 11° TOHO Round (R11)
8gm 8° TOHO Demi Round (D8)
1gm 15° TOHO Round (R15)
Fireline or Wildfire

Bracelet as instructed measures approx 6.25" before clasp. Each Small Component measures 1/2", each Large Component measures 1/8".

INSTRUCTIONS

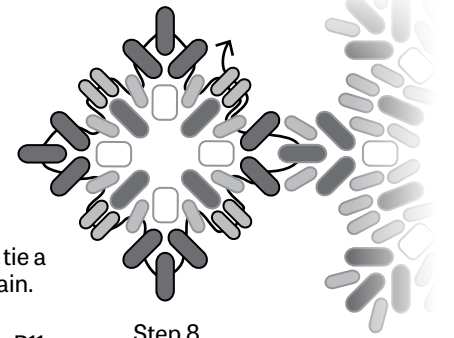
- Large Component:** On one yard of thread, add two D11, one D8. Repeat seven times. Form a ring and tie a knot against the tail leaving the tension loose. Pass through all beads again. Continue passing until exiting between two D11.
- Add R11, then pass through D11, D8, D11. Repeat seven times. Pass through R11.
- Add D11, pass through D8, add D11, pass through R11. Repeat seven times. Pass through D11.
- Add two D11, pass through D11, add three D8, pass through D11. Repeat seven times. Pass through two D11, skip one D11, then pass through then D8 as shown.
- Add D11, pass through D8, add D11, pass through D8, two D11, D8 as shown. Repeat seven times. Weave into the piece before tying off and trimming the threads.



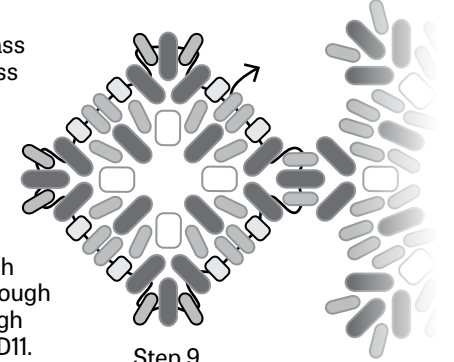
Step 6

Step 7

- Small Component:** On one yard of thread, add R11, D8, R11, D8, R11, D8, R11, D8. Form a ring and tie a knot against the tail. Pass through all beads again. Continue passing until exiting R11.
- Add D11, pass through D8, add D11, pass through R11. Repeat three times. Pass through the next D11.
- Add two D11, pass through D11, add three D8, pass through D11. Repeat two times. Add two D11, pass through D11. The fourth corner of the Small Component will connect to one of the points on the Large Component. Add D8 then pass through the D8 on one of the points of the Large Component. Add D8, then pass through the next three D11.
- Add R15, pass through D8, add D11, pass through D8, add D11, pass through D8, add R15, pass through two D11. Repeat two times. Add R15, pass through D8, D11, D8, D11, D8. Add R15, pass through two D11. Weave into the piece before tying off.



Step 8



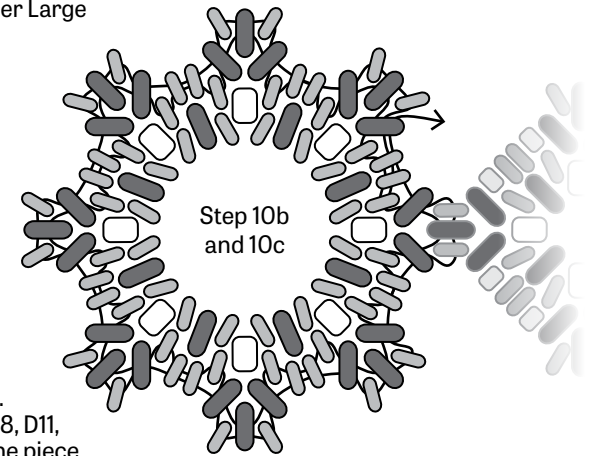
Step 9

- a) Follow Steps 1–3 to begin another Large Component.

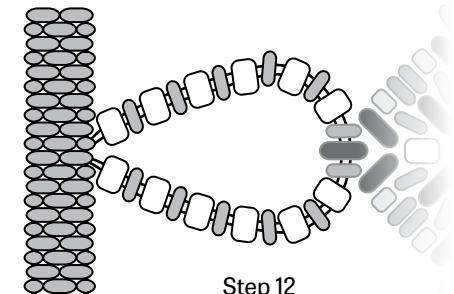
b) Add two D11, pass through D11, add three D8, pass through D11. Repeat six times. Add two D11, pass through D11. Connect the eight point of the Large Component to the Small Component. Add D8 then pass through the D8 on one of the points of the Small Component. Add D8, then pass through two D11, then D8.

c) Add D11, pass through D8, add D11, pass through D8, two D11, D8. Repeat six times. Pass through D8, D11, D8, D11, D8, two D11. Weave into the piece before tying off.

- Repeat Steps 6–10 to alternate creating and joining five Small and five Large Components.
- Create a toggle using peyote stitch.** On a new length of thread add 20 D11 to start your first row of peyote. Make a total of 10 rows, then zip the ends together to form a tube. Connect the toggle to one end of the bracelet with D11 and R11 as shown so that a Large Component will be used as the ring for the toggle bar.



Step 10b
and 10c



Step 12